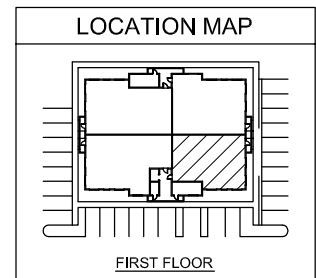
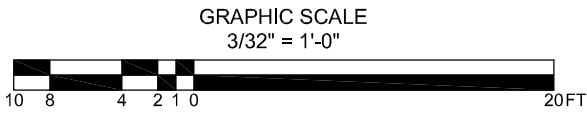
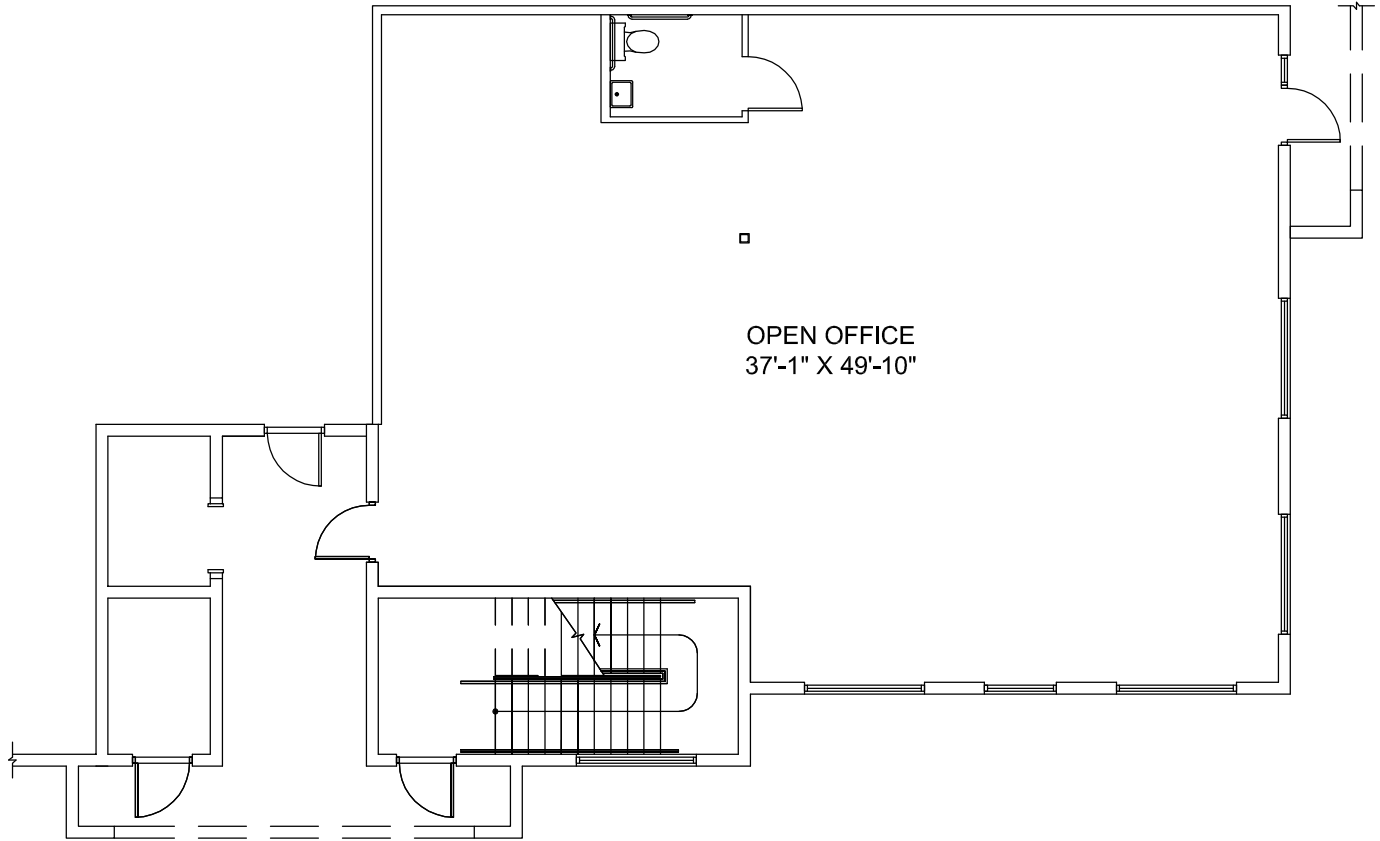


PENINSULA
EXECUTIVE CENTER

SUITE 101
(FIRST FLOOR)
2,232 S.F.

THE ABOVE DRAWINGS ARE CONCEPTUAL ONLY AND ARE SUBJECT TO CHANGE WITHOUT NOTICE AT THE DISCRETION OF THE DEVELOPER. THE DEVELOPER RESERVES THE RIGHT TO MAKE ADDITIONS, DELETIONS AND MODIFICATIONS TO THE DRAWINGS AS THE DEVELOPER MAY DEEM APPROPRIATE OR DESIRABLE. DIMENSIONS AND SQUARE FOOTAGE ARE APPROXIMATE AND MAY VARY WITH ACTUAL CONSTRUCTION. ALL STATED UNIT SIZES REFLECT A COMMON AREA INCREASE FACTOR OF 6%.
© 2006 KENNETH CARLSON ARCHITECT - P.A.

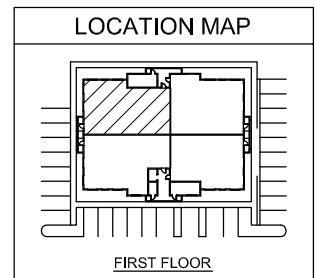
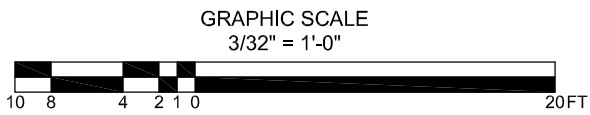
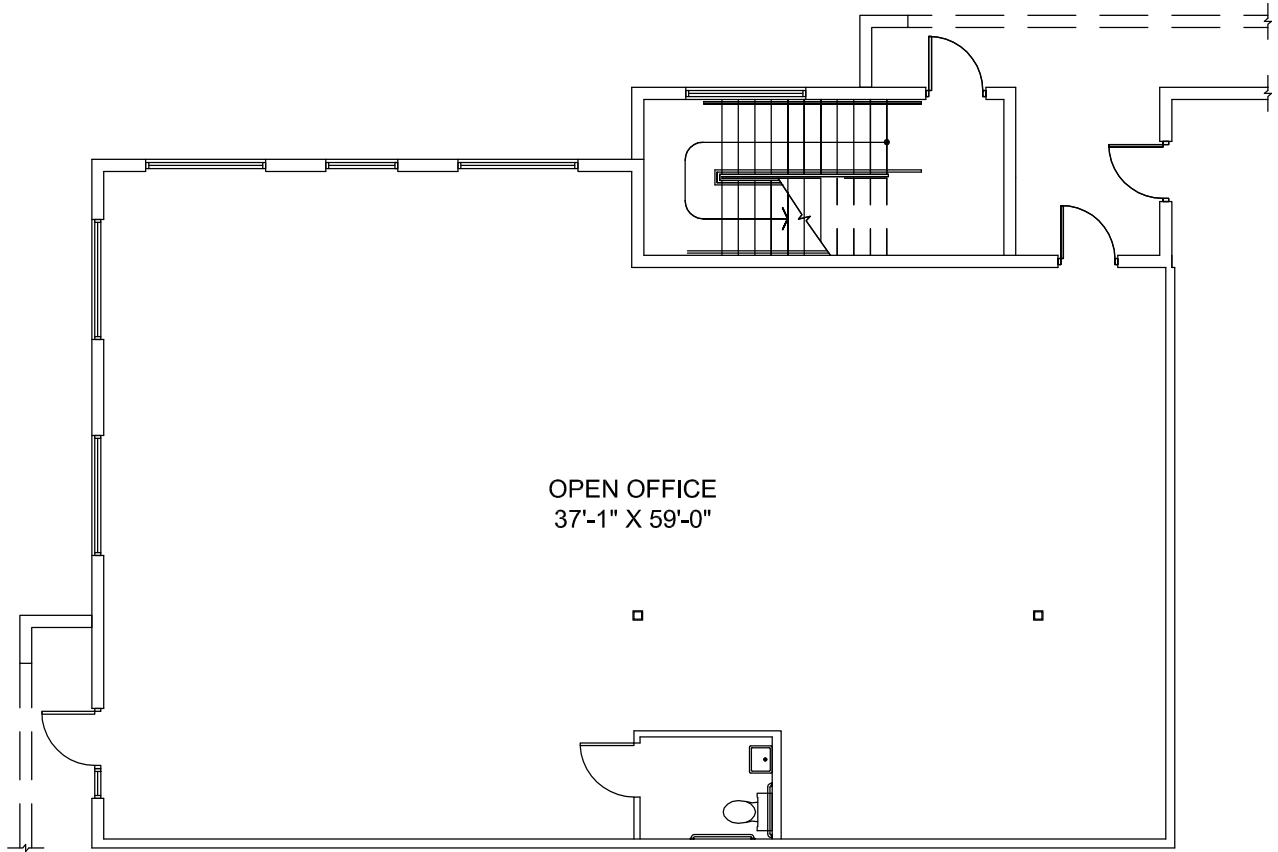


PENINSULA

EXECUTIVE CENTER

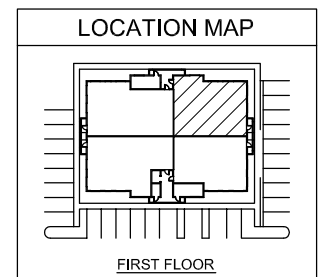
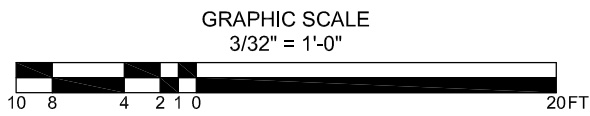
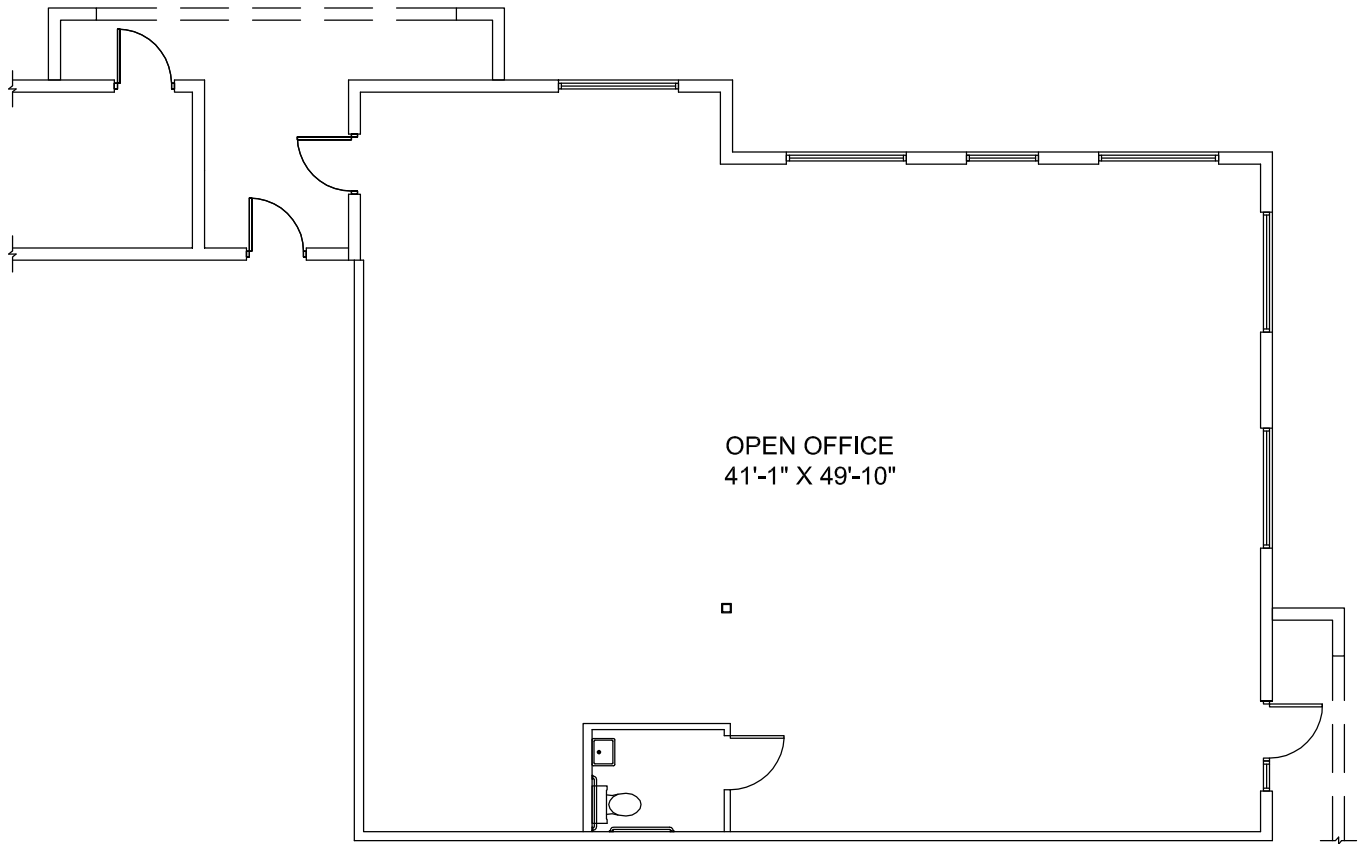
SUITE 102
 (FIRST FLOOR)

1,918 S.F.



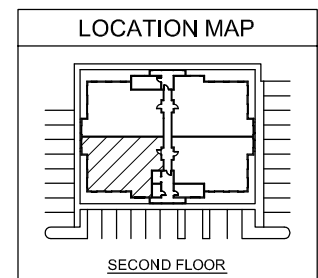
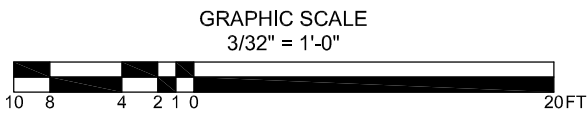
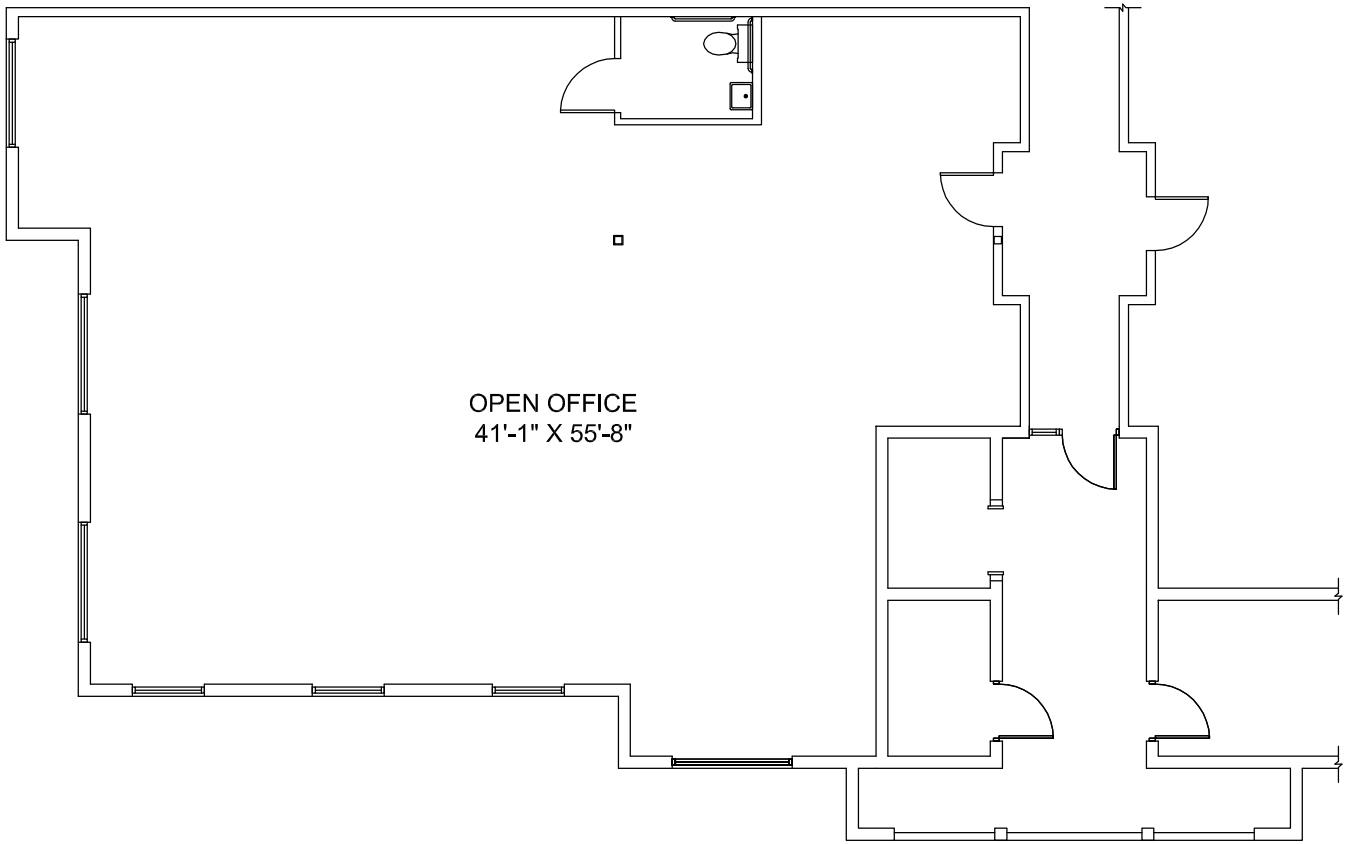
PENINSULA
EXECUTIVE CENTER

SUITE 103
(FIRST FLOOR)
2,229 S.F.



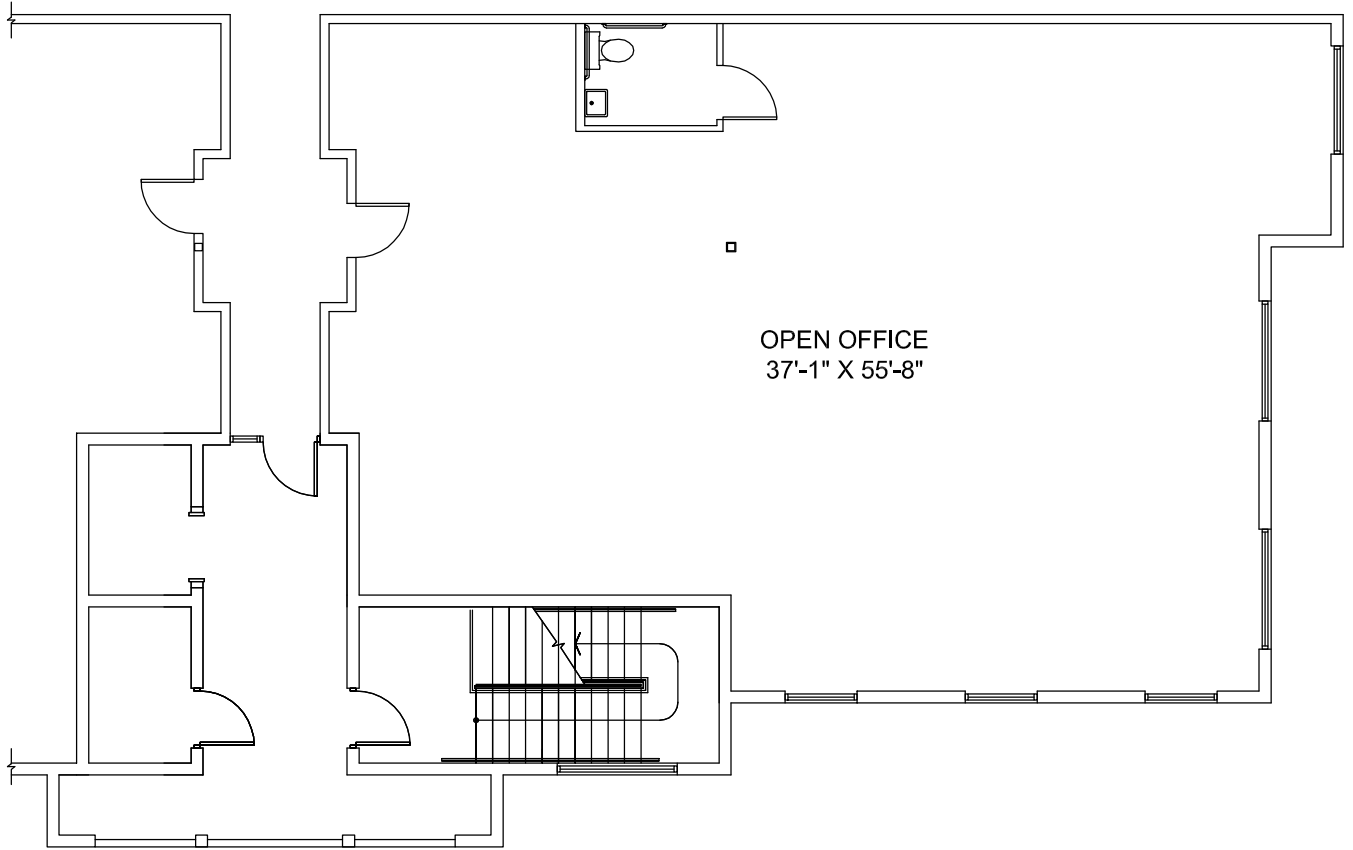
PENINSULA
EXECUTIVE CENTER

SUITE 104
(FIRST FLOOR)
2,137 S.F.

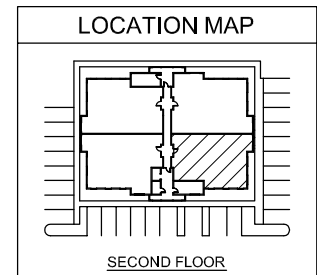
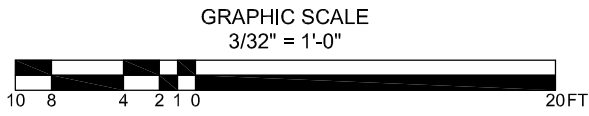


PENINSULA
EXECUTIVE CENTER

SUITE 201
(SECOND FLOOR)
2,096 S.F.

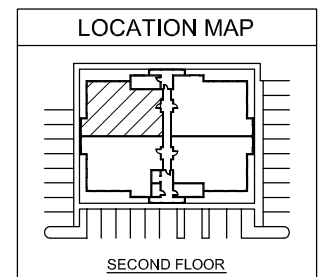
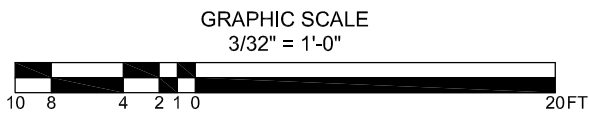
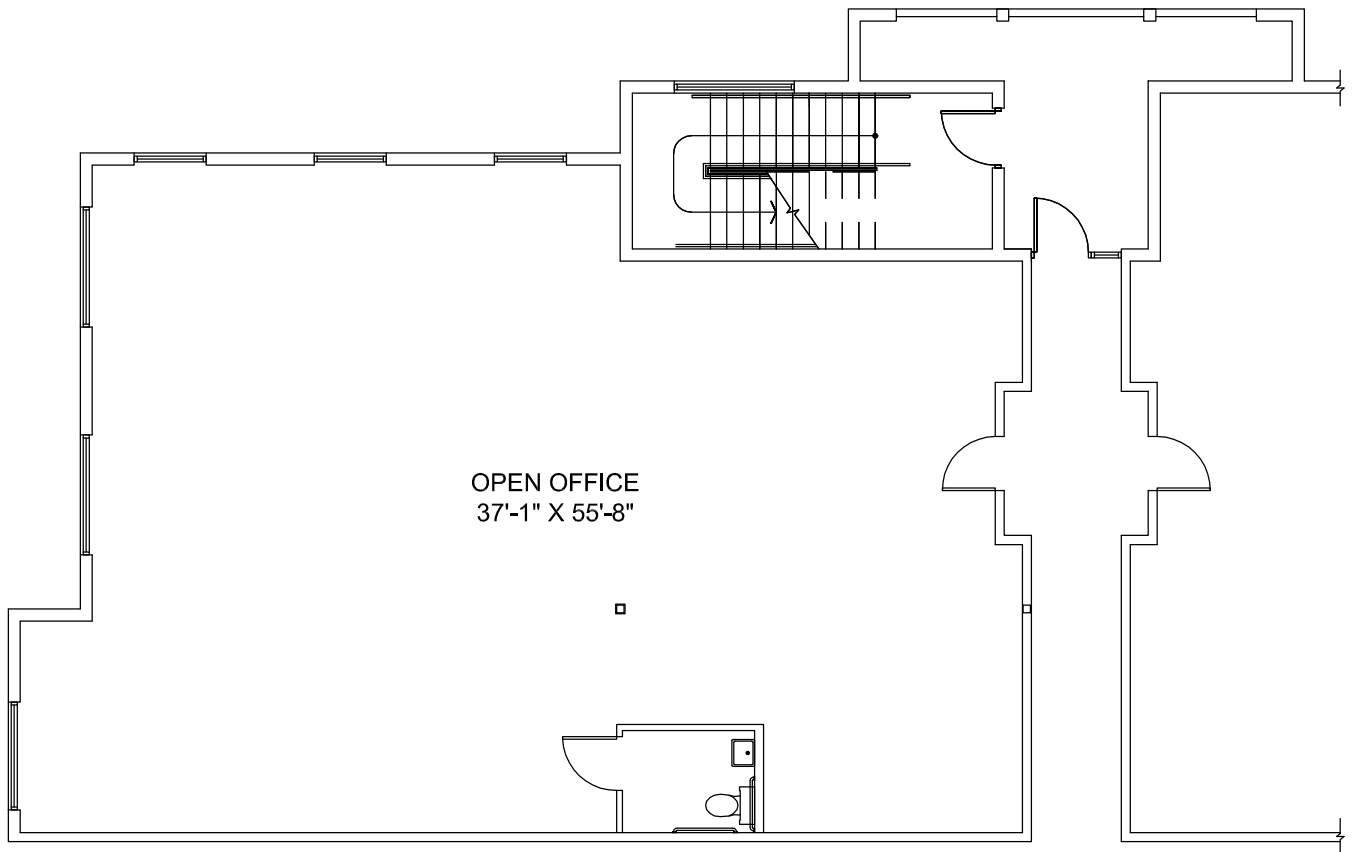


OPEN OFFICE
37'-1" X 55'-8"



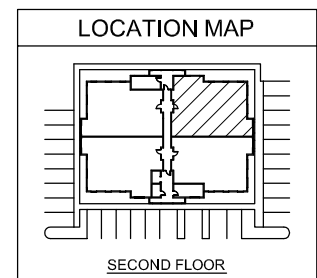
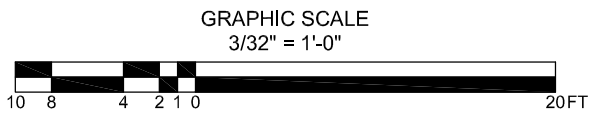
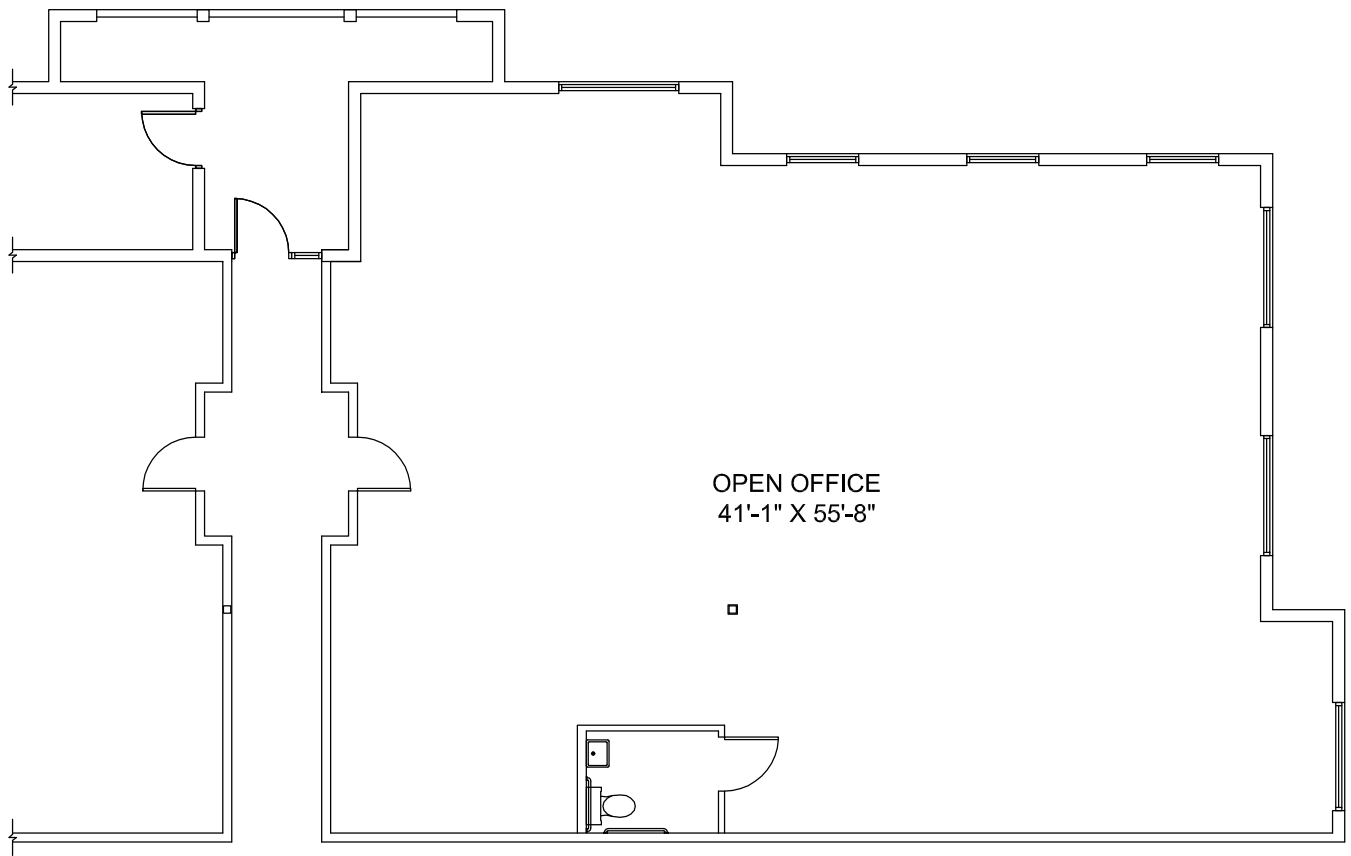
PENINSULA
EXECUTIVE CENTER

SUITE 202
(SECOND FLOOR)
2,010 S.F.



PENINSULA
EXECUTIVE CENTER

SUITE 203
(SECOND FLOOR)
2,025 S.F.



PENINSULA
EXECUTIVE CENTER

SUITE 204
(SECOND FLOOR)
2,250 S.F.