

WestPark


PROFESSIONAL  
CENTER


**BUILDING 1**  
**UNIT 101**  
( FIRST FLOOR )

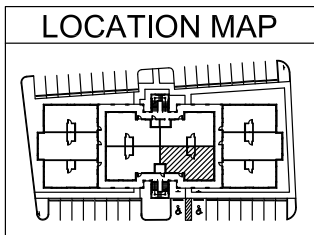
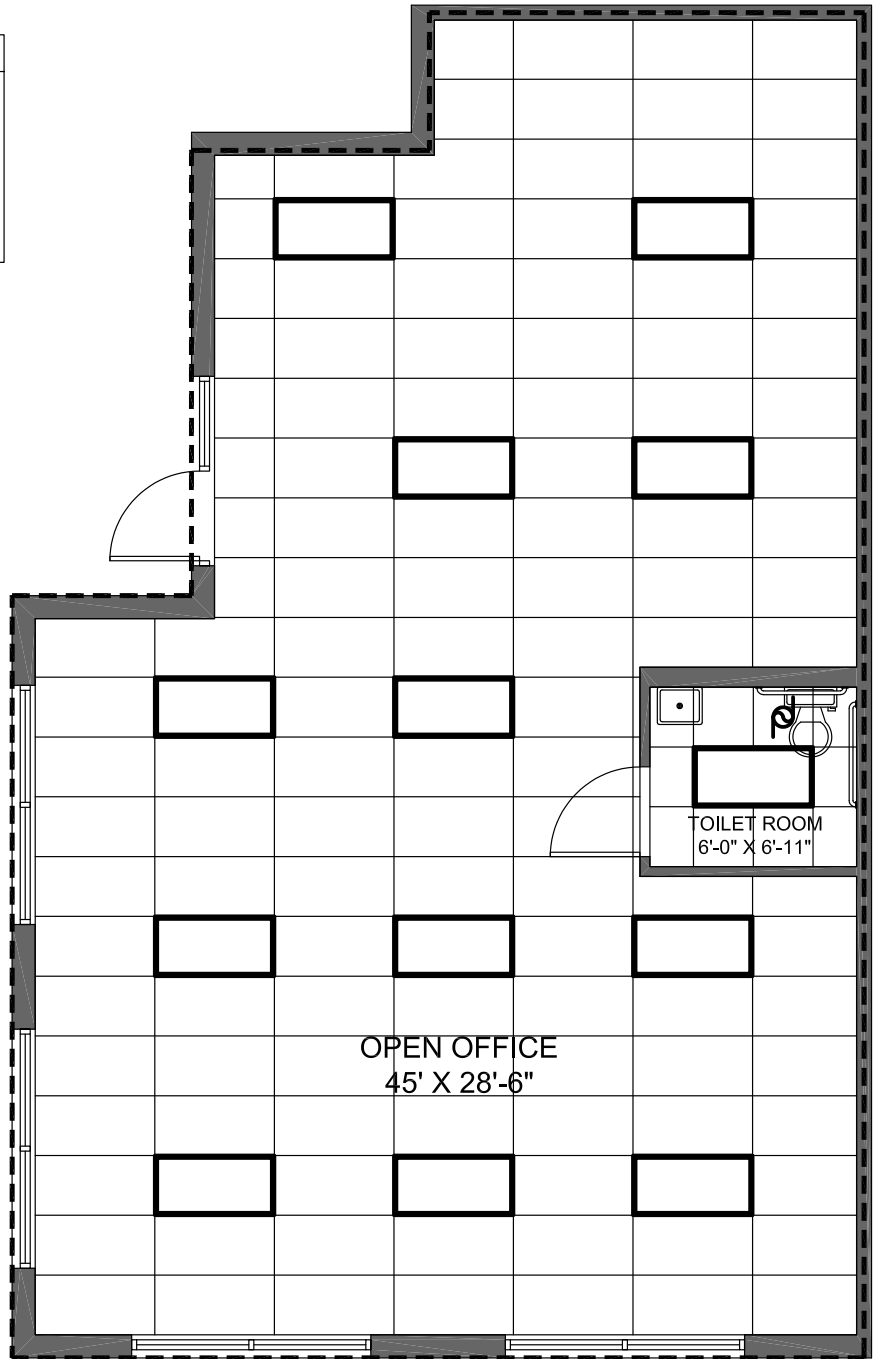
1,035 S.F.

THE ABOVE DRAWING IS CONCEPTUAL ONLY AND IS SUBJECT TO CHANGE WITHOUT NOTICE AT THE DISCRETION OF THE DEVELOPER. THE DEVELOPER RESERVES THE RIGHT TO MAKE ADDITIONS, DELETIONS AND MODIFICATIONS TO THE DRAWINGS AS THE DEVELOPER MAY DEEM APPROPRIATE OR DESIRABLE. DIMENSIONS AND SQUARE FOOTAGE ARE APPROXIMATE AND MAY VARY WITH ACTUAL CONSTRUCTION.  
© 2005 KENNETH CARLSON ARCHITECT - P.A.

**LEGEND**

 EXHAUST FAN

 2X4 GRID FIXTURE

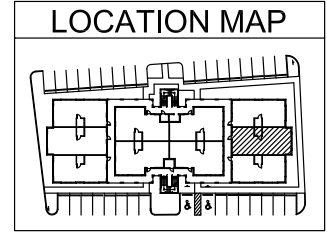
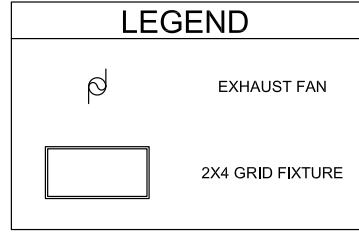
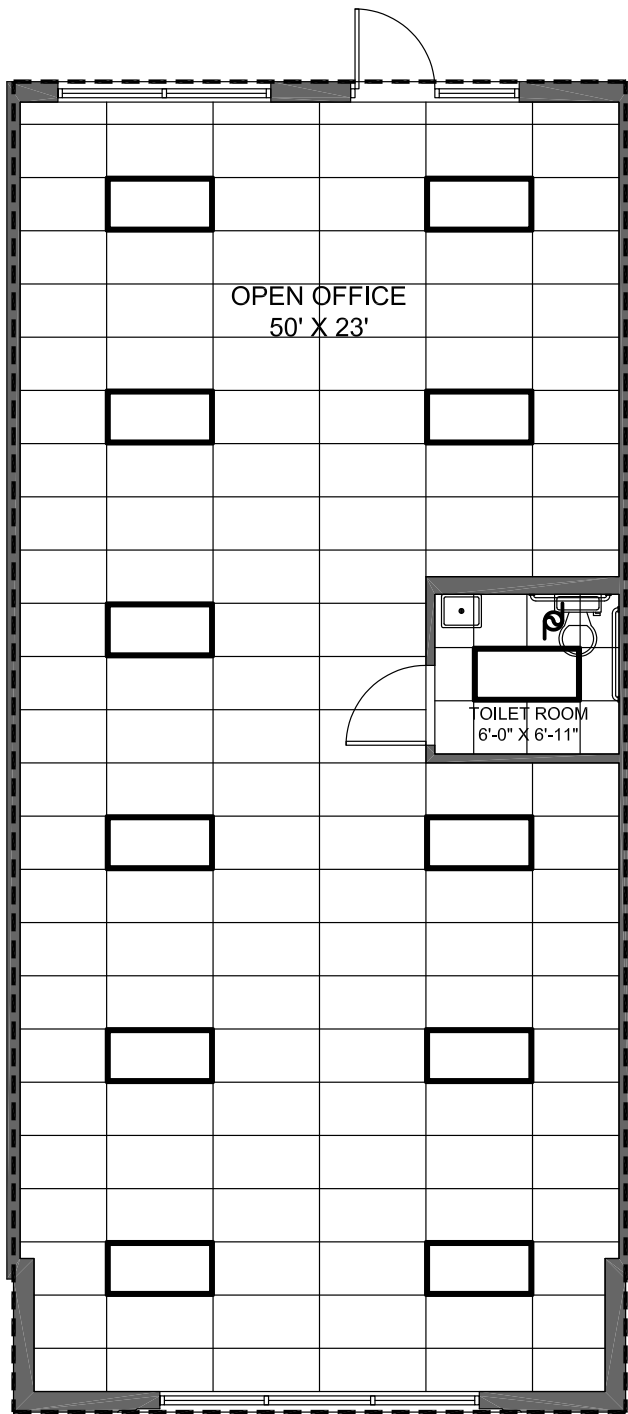


**WestPark**  
 PROFESSIONAL  
 CENTER

**BUILDING 1**  
**UNIT 102**  
 ( FIRST FLOOR )

1,128 S.F.

THE ABOVE DRAWING IS CONCEPTUAL ONLY AND IS SUBJECT TO CHANGE WITHOUT NOTICE AT THE DISCRETION OF THE DEVELOPER. THE DEVELOPER RESERVES THE RIGHT TO MAKE ADDITIONS, DELETIONS AND MODIFICATIONS TO THE DRAWINGS AS THE DEVELOPER MAY DEEM APPROPRIATE OR DESIRABLE. DIMENSIONS AND SQUARE FOOTAGE ARE APPROXIMATE AND MAY VARY WITH ACTUAL CONSTRUCTION.  
 © 2005 KENNETH CARLSON ARCHITECT - P.A.

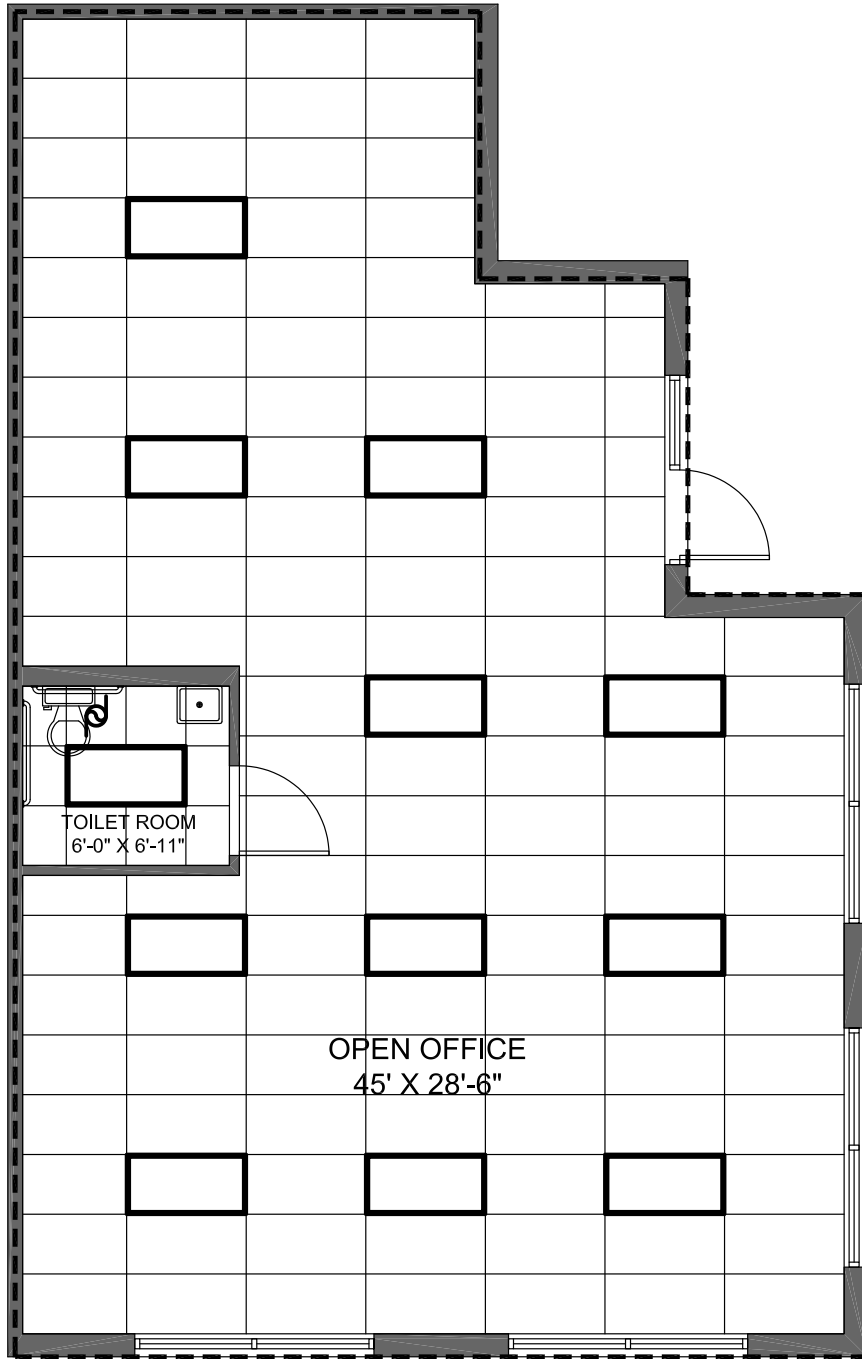




**WestPark**  
 PROFESSIONAL  
 CENTER

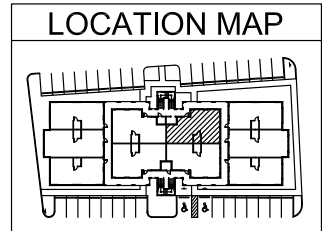
**BUILDING 1**  
**UNIT 103**  
 ( FIRST FLOOR )

1,150 S.F.

THE ABOVE DRAWING IS CONCEPTUAL ONLY AND IS SUBJECT TO CHANGE WITHOUT NOTICE AT THE DISCRETION OF THE DEVELOPER. THE DEVELOPER RESERVES THE RIGHT TO MAKE ADDITIONS, DELETIONS AND MODIFICATIONS TO THE DRAWINGS AS THE DEVELOPER MAY DEEM APPROPRIATE OR DESIRABLE. DIMENSIONS AND SQUARE FOOTAGE ARE APPROXIMATE AND MAY VARY WITH ACTUAL CONSTRUCTION.  
 © 2005 KENNETH CARLSON ARCHITECT - P.A.



LEGEND	
	EXHAUST FAN
	2X4 GRID FIXTURE

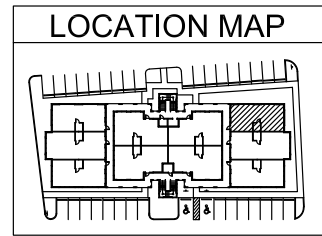
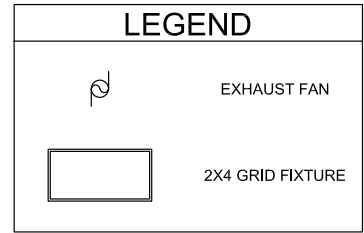
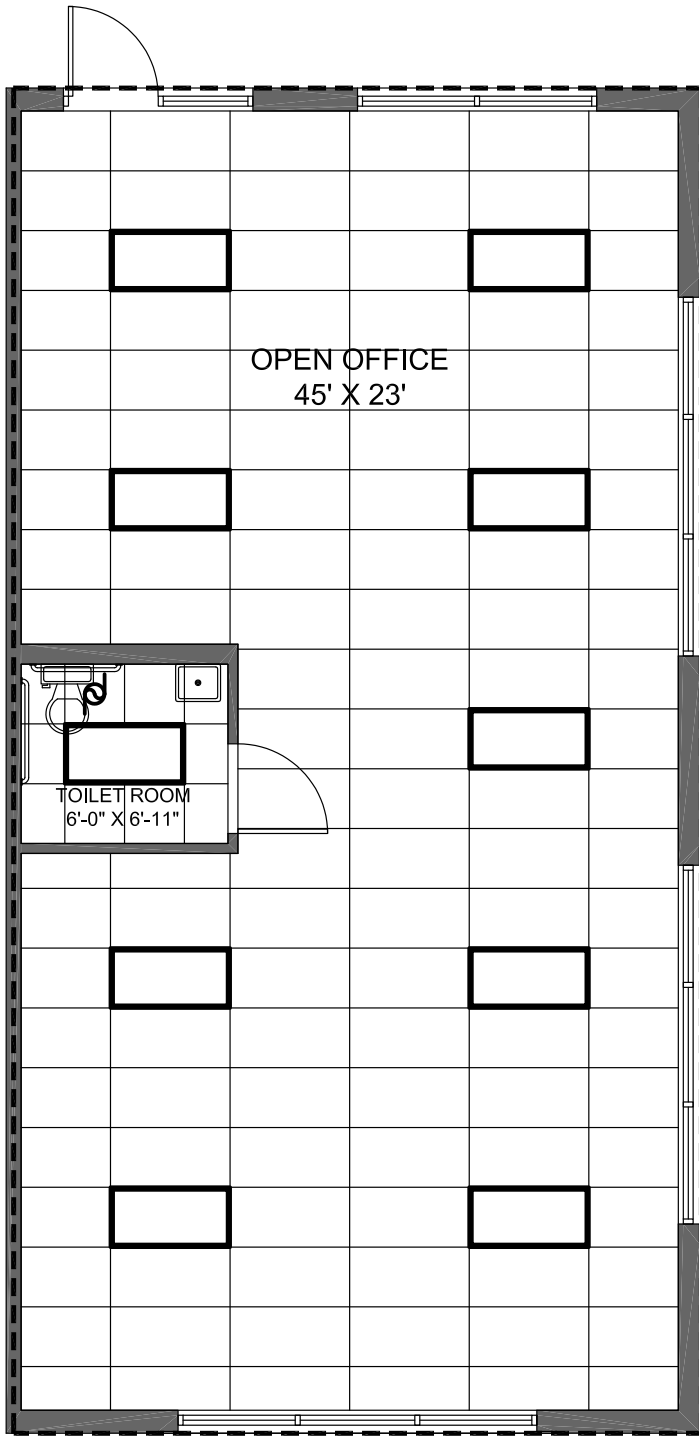


**WestPark**  
 PROFESSIONAL  
 CENTER

**BUILDING 1**  
**UNIT 104**  
 ( FIRST FLOOR )

1,103 S.F.

THE ABOVE DRAWING IS CONCEPTUAL ONLY AND IS SUBJECT TO CHANGE WITHOUT NOTICE AT THE DISCRETION OF THE DEVELOPER. THE DEVELOPER RESERVES THE RIGHT TO MAKE ADDITIONS, DELETIONS AND MODIFICATIONS TO THE DRAWINGS AS THE DEVELOPER MAY DEEM APPROPRIATE OR DESIRABLE. DIMENSIONS AND SQUARE FOOTAGE ARE APPROXIMATE AND MAY VARY WITH ACTUAL CONSTRUCTION.  
 © 2005 KENNETH CARLSON ARCHITECT - P.A.



WestPark


PROFESSIONAL  
CENTER


**BUILDING 1**  
**UNIT 105**  
( FIRST FLOOR )

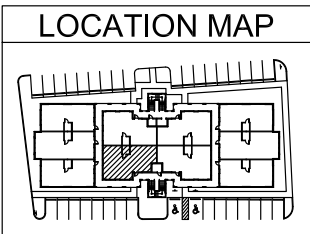
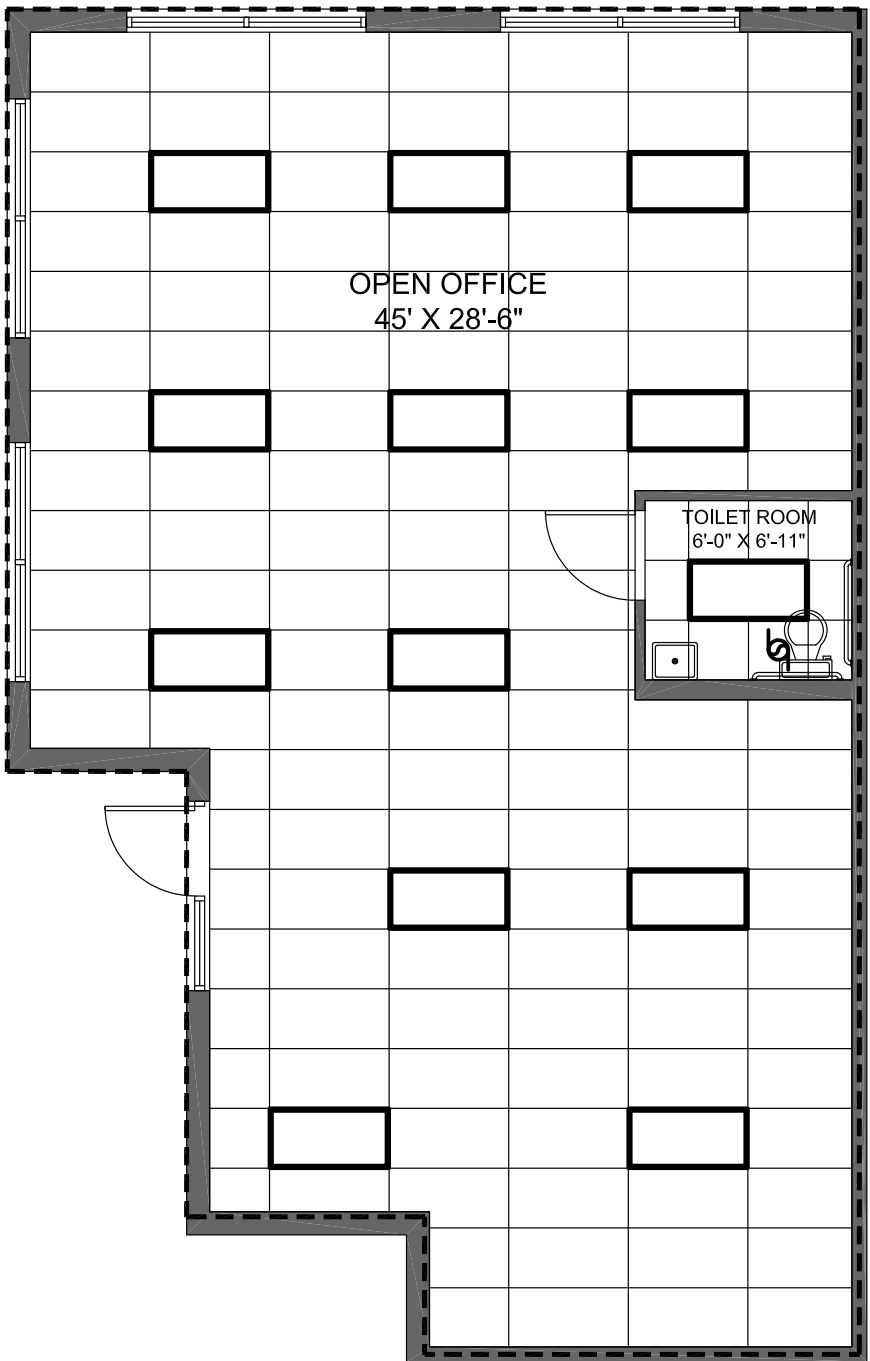
1,035 S.F.

THE ABOVE DRAWING IS CONCEPTUAL ONLY AND IS SUBJECT TO CHANGE WITHOUT NOTICE AT THE DISCRETION OF THE DEVELOPER. THE DEVELOPER RESERVES THE RIGHT TO MAKE ADDITIONS, DELETIONS AND MODIFICATIONS TO THE DRAWINGS AS THE DEVELOPER MAY DEEM APPROPRIATE OR DESIRABLE. DIMENSIONS AND SQUARE FOOTAGE ARE APPROXIMATE AND MAY VARY WITH ACTUAL CONSTRUCTION.  
© 2005 KENNETH CARLSON ARCHITECT - P.A.

**LEGEND**

 EXHAUST FAN

 2X4 GRID FIXTURE

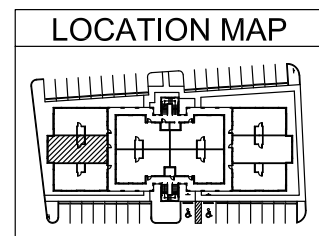
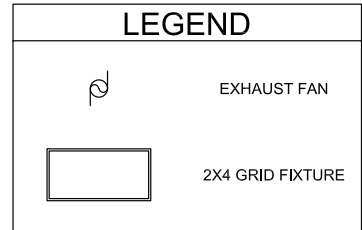
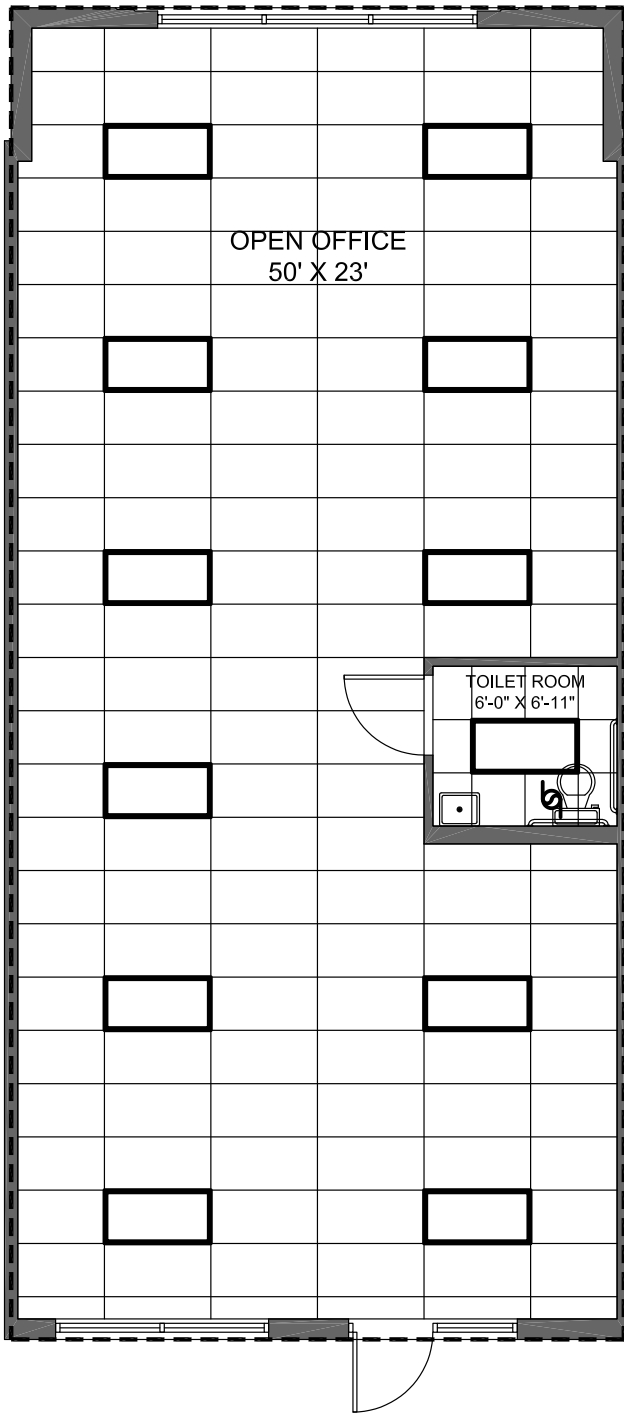


**WestPark**  
 PROFESSIONAL  
 CENTER

**BUILDING 1**  
**UNIT 107**  
 ( FIRST FLOOR )

1,128 S.F.

THE ABOVE DRAWING IS CONCEPTUAL ONLY AND IS SUBJECT TO CHANGE WITHOUT NOTICE AT THE DISCRETION OF THE DEVELOPER. THE DEVELOPER RESERVES THE RIGHT TO MAKE ADDITIONS, DELETIONS AND MODIFICATIONS TO THE DRAWINGS AS THE DEVELOPER MAY DEEM APPROPRIATE OR DESIRABLE. DIMENSIONS AND SQUARE FOOTAGE ARE APPROXIMATE AND MAY VARY WITH ACTUAL CONSTRUCTION.  
 © 2005 KENNETH CARLSON ARCHITECT - P.A.



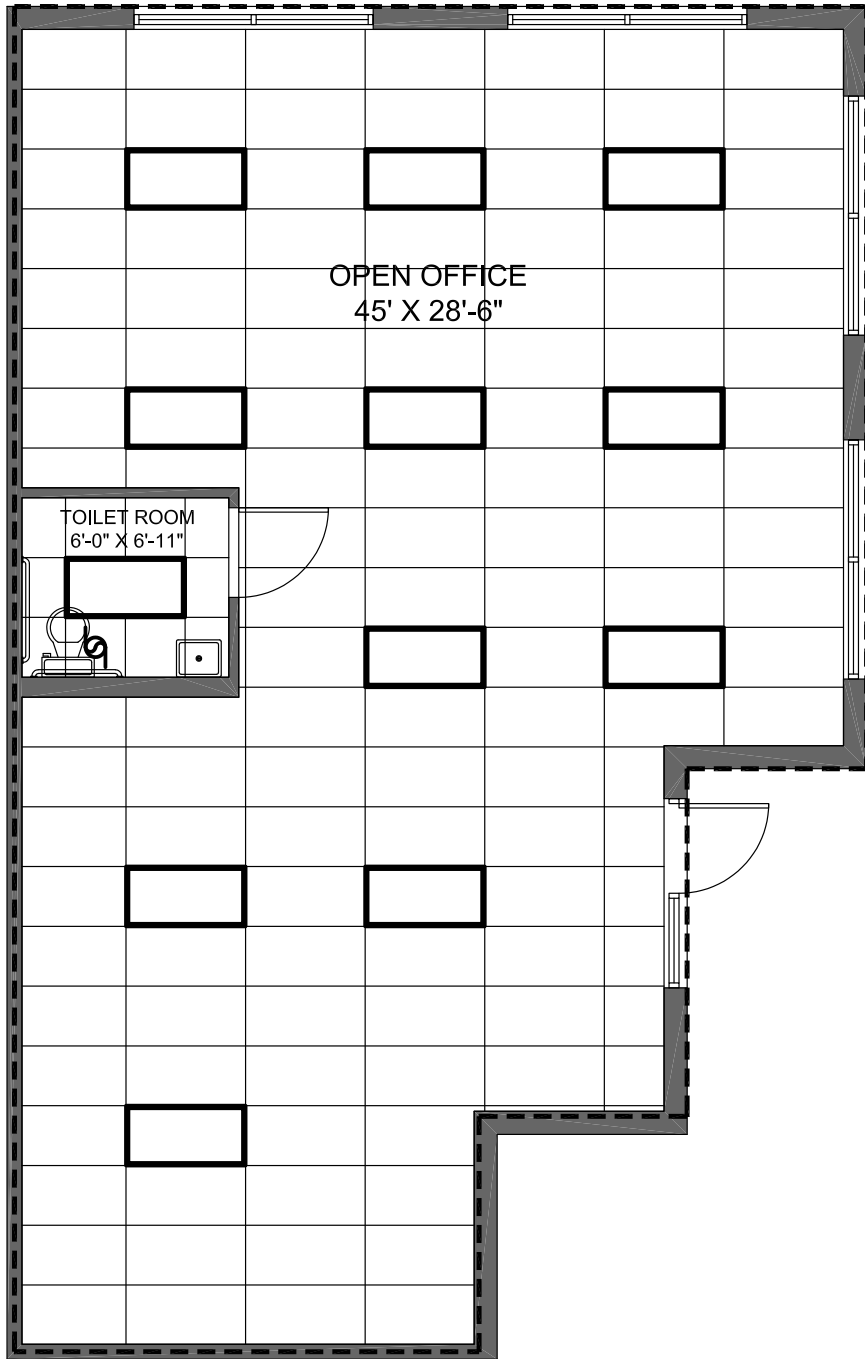
WestPark

PROFESSIONAL  
CENTER

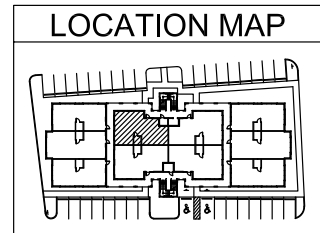
**BUILDING 1**  
**UNIT 108**  
( FIRST FLOOR )

1,150 S.F.

THE ABOVE DRAWING IS CONCEPTUAL ONLY AND IS SUBJECT TO CHANGE WITHOUT NOTICE AT THE DISCRETION OF THE DEVELOPER. THE DEVELOPER RESERVES THE RIGHT TO MAKE ADDITIONS, DELETIONS AND MODIFICATIONS TO THE DRAWINGS AS THE DEVELOPER MAY DEEM APPROPRIATE OR DESIRABLE. DIMENSIONS AND SQUARE FOOTAGE ARE APPROXIMATE AND MAY VARY WITH ACTUAL CONSTRUCTION.  
© 2005 KENNETH CARLSON ARCHITECT - P.A.



LEGEND	
	EXHAUST FAN
	2X4 GRID FIXTURE



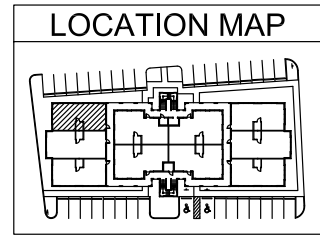
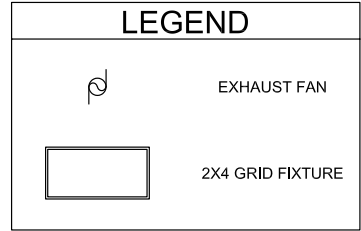
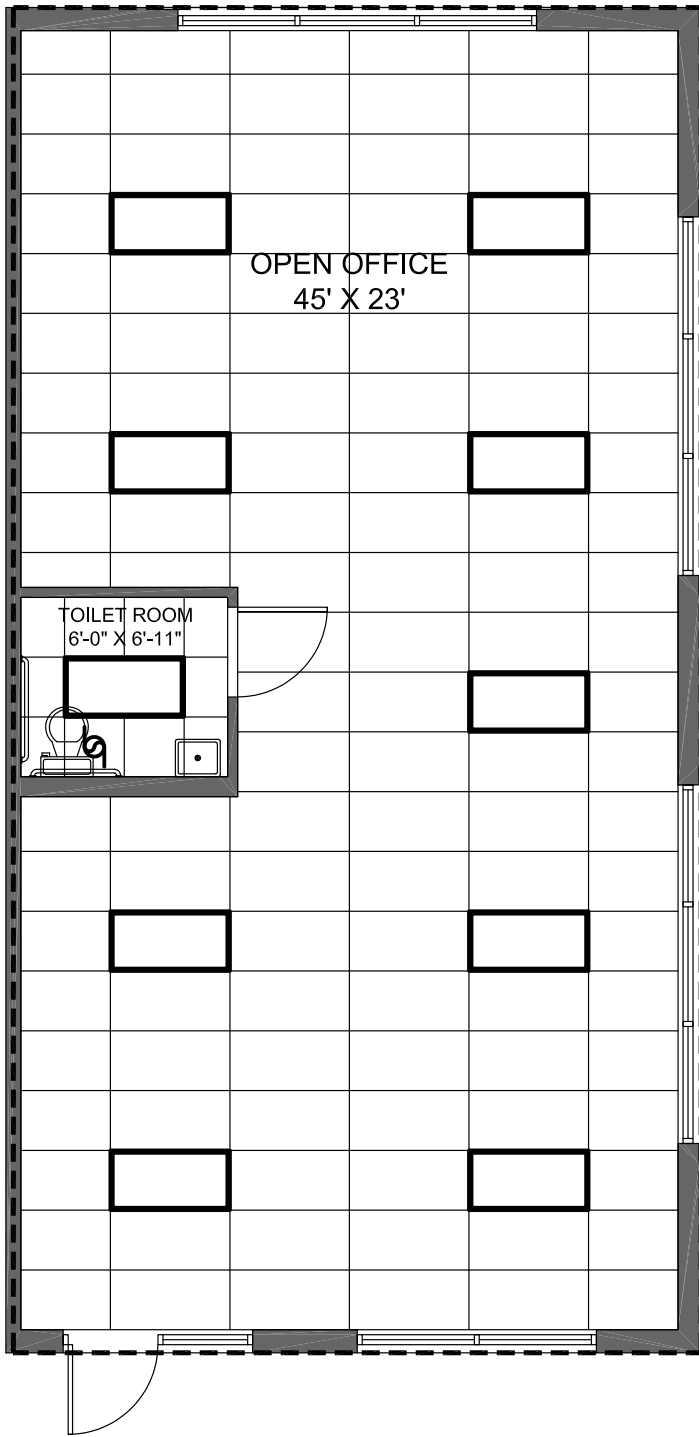
**WestPark**  
 PROFESSIONAL  
 CENTER

**BUILDING 1**  
**UNIT 109**  
 ( FIRST FLOOR )

1,110 S.F.

THE ABOVE DRAWING IS CONCEPTUAL ONLY AND IS SUBJECT TO CHANGE WITHOUT NOTICE AT THE DISCRETION OF THE DEVELOPER. THE DEVELOPER RESERVES THE RIGHT TO MAKE ADDITIONS, DELETIONS AND MODIFICATIONS TO THE DRAWINGS AS THE DEVELOPER MAY DEEM APPROPRIATE OR DESIRABLE. DIMENSIONS AND SQUARE FOOTAGE ARE APPROXIMATE AND MAY VARY WITH ACTUAL CONSTRUCTION.  
 © 2005 KENNETH CARLSON ARCHITECT - P.A.



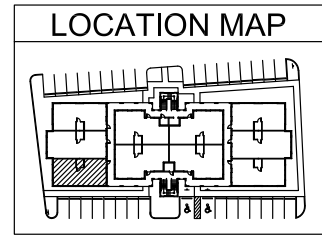
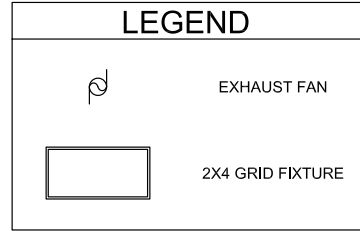
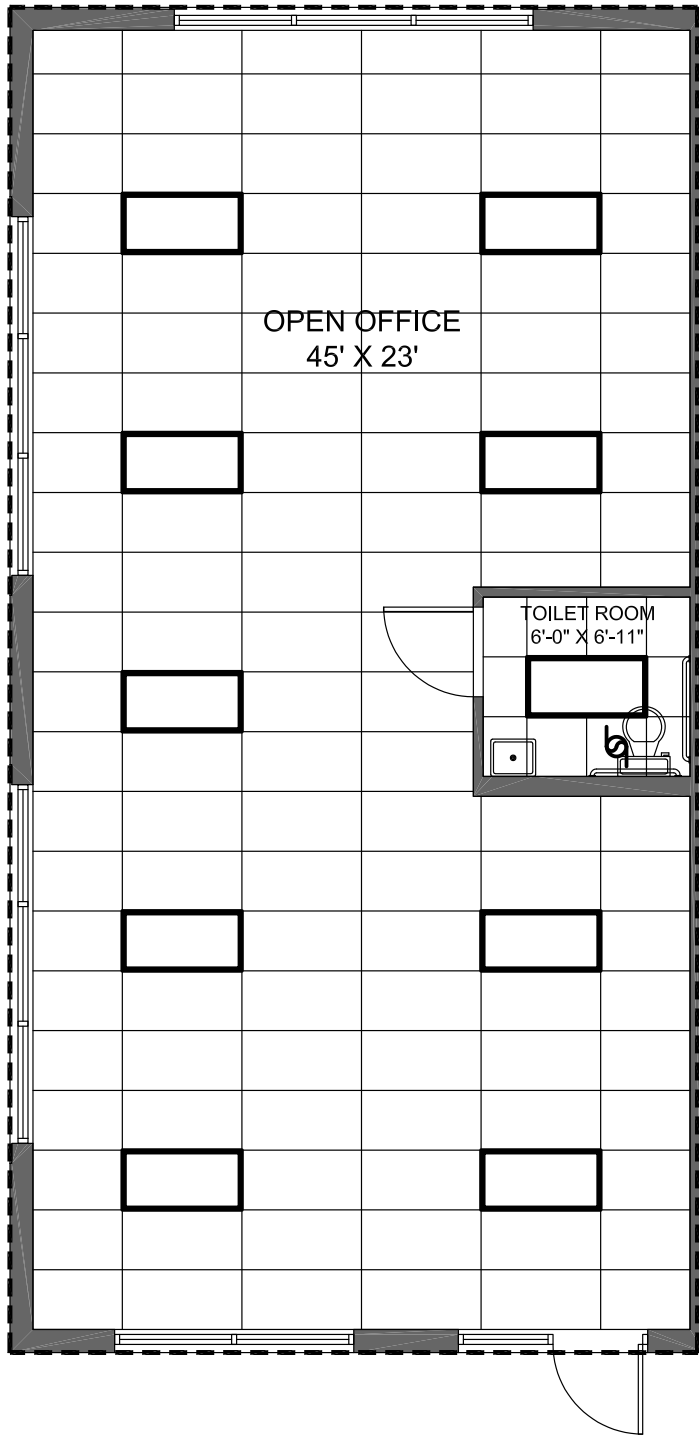


**WestPark**  
 PROFESSIONAL  
 CENTER

**BUILDING 1**  
**UNIT 110**  
 ( FIRST FLOOR )

1,035 S.F.

THE ABOVE DRAWING IS CONCEPTUAL ONLY AND IS SUBJECT TO CHANGE WITHOUT NOTICE AT THE DISCRETION OF THE DEVELOPER. THE DEVELOPER RESERVES THE RIGHT TO MAKE ADDITIONS, DELETIONS AND MODIFICATIONS TO THE DRAWINGS AS THE DEVELOPER MAY DEEM APPROPRIATE OR DESIRABLE. DIMENSIONS AND SQUARE FOOTAGE ARE APPROXIMATE AND MAY VARY WITH ACTUAL CONSTRUCTION.  
 © 2005 KENNETH CARLSON ARCHITECT - P.A.

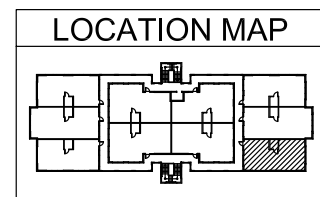
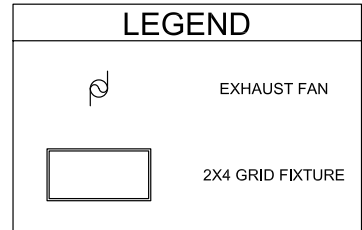
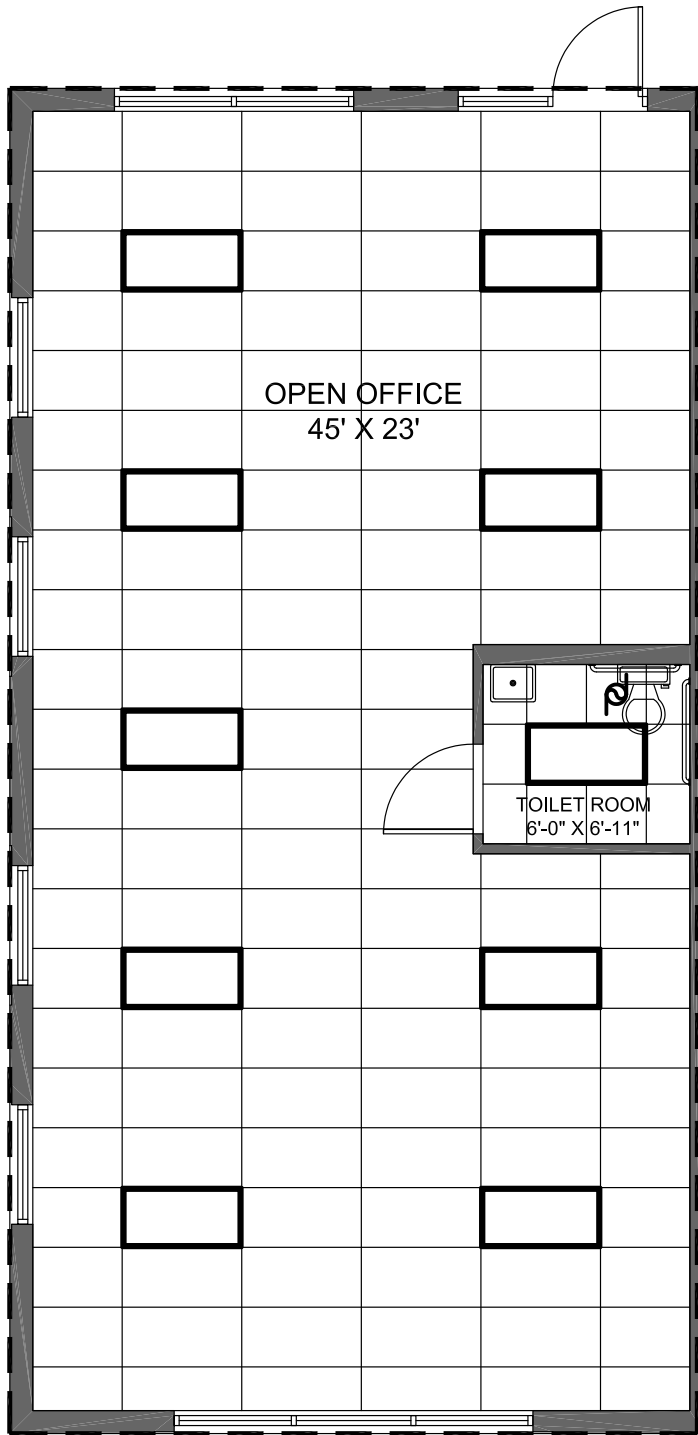


**WestPark**  
 PROFESSIONAL  
 CENTER

**BUILDING 1**  
**UNIT 106**  
 ( FIRST FLOOR )

1,035 S.F.

THE ABOVE DRAWING IS CONCEPTUAL ONLY AND IS SUBJECT TO CHANGE WITHOUT NOTICE AT THE DISCRETION OF THE DEVELOPER. THE DEVELOPER RESERVES THE RIGHT TO MAKE ADDITIONS, DELETIONS AND MODIFICATIONS TO THE DRAWINGS AS THE DEVELOPER MAY DEEM APPROPRIATE OR DESIRABLE. DIMENSIONS AND SQUARE FOOTAGE ARE APPROXIMATE AND MAY VARY WITH ACTUAL CONSTRUCTION.  
 © 2005 KENNETH CARLSON ARCHITECT - P.A.



WestPark


PROFESSIONAL  
CENTER


**BUILDING 2**  
**UNIT 201**  
( SECOND FLOOR )

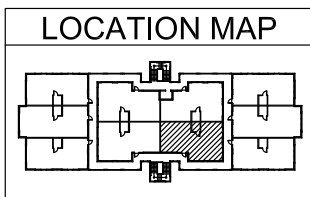
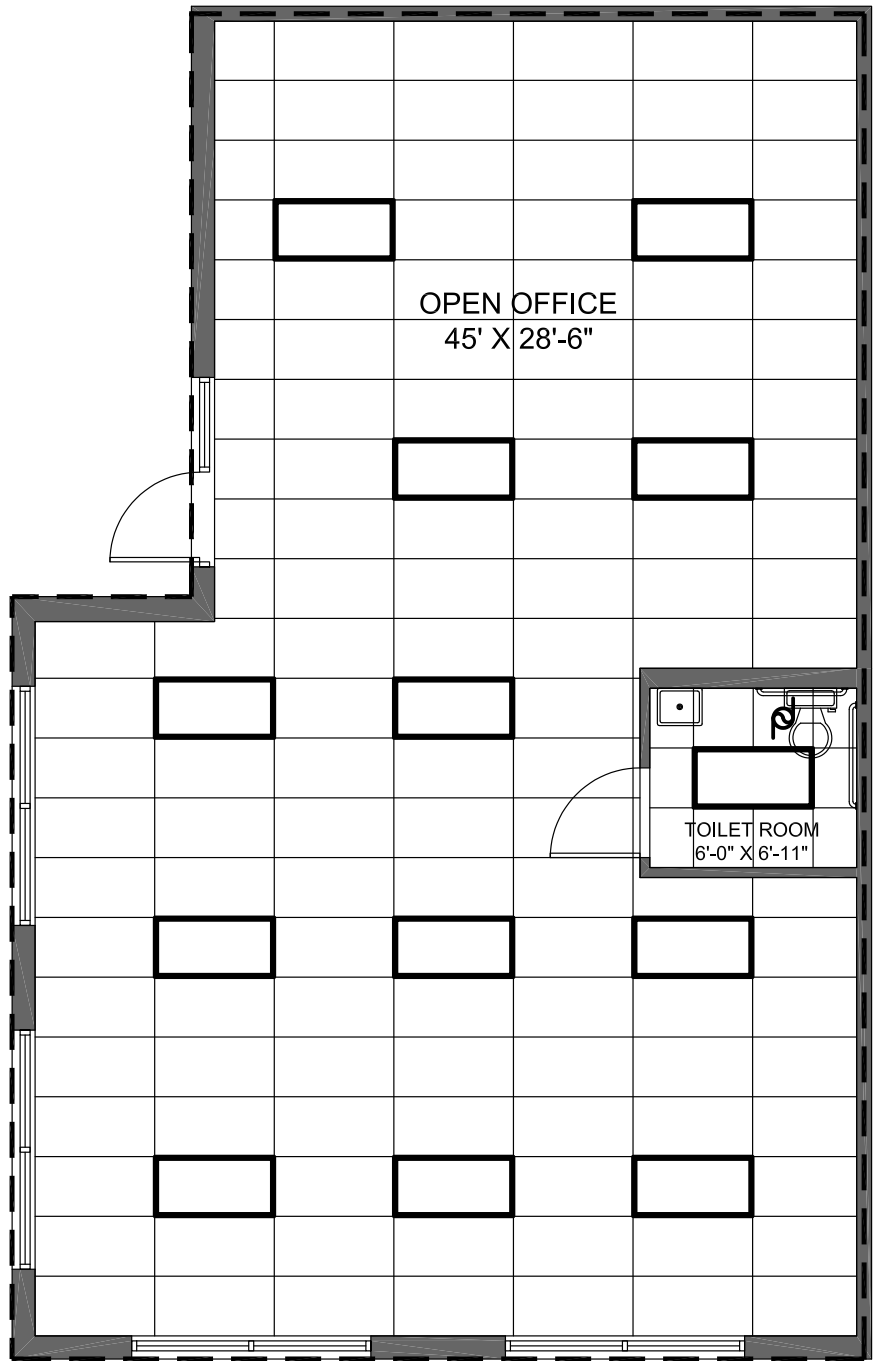
1,035 S.F.

THE ABOVE DRAWING IS CONCEPTUAL ONLY AND IS SUBJECT TO CHANGE WITHOUT NOTICE AT THE DISCRETION OF THE DEVELOPER. THE DEVELOPER RESERVES THE RIGHT TO MAKE ADDITIONS, DELETIONS AND MODIFICATIONS TO THE DRAWINGS AS THE DEVELOPER MAY DEEM APPROPRIATE OR DESIRABLE. DIMENSIONS AND SQUARE FOOTAGE ARE APPROXIMATE AND MAY VARY WITH ACTUAL CONSTRUCTION.  
© 2005 KENNETH CARLSON ARCHITECT - P.A.

**LEGEND**

 EXHAUST FAN

 2X4 GRID FIXTURE



**WestPark**

---

PROFESSIONAL  
CENTER

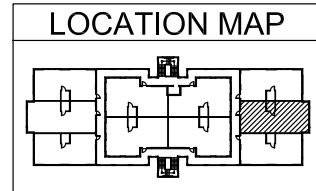
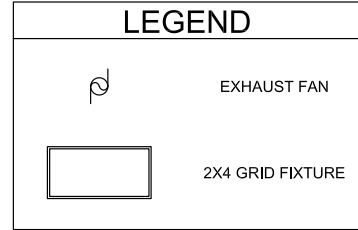
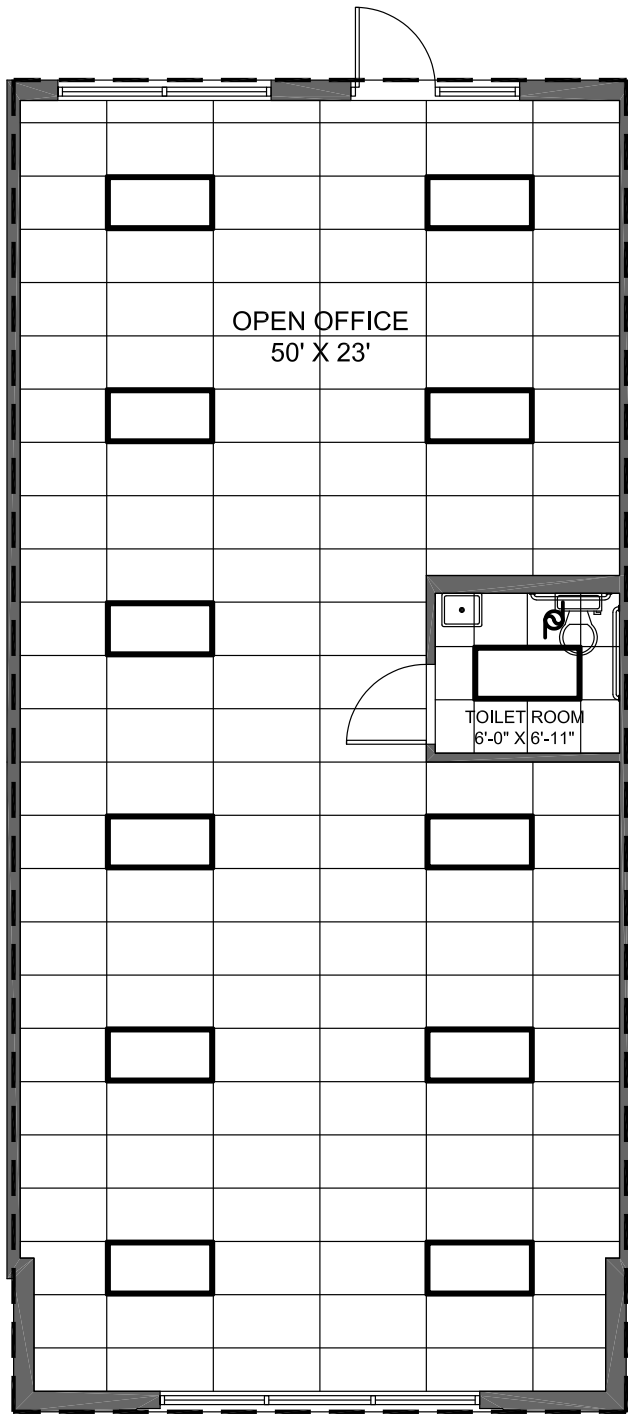
**BUILDING 2**  
**UNIT 202**  
( SECOND FLOOR )

---

1,165 S.F.

---

THE ABOVE DRAWING IS CONCEPTUAL ONLY AND IS SUBJECT TO CHANGE WITHOUT NOTICE AT THE DISCRETION OF THE DEVELOPER. THE DEVELOPER RESERVES THE RIGHT TO MAKE ADDITIONS, DELETIONS AND MODIFICATIONS TO THE DRAWINGS AS THE DEVELOPER MAY DEEM APPROPRIATE OR DESIRABLE. DIMENSIONS AND SQUARE FOOTAGE ARE APPROXIMATE AND MAY VARY WITH ACTUAL CONSTRUCTION.  
© 2005 KENNETH CARLSON ARCHITECT - P.A.



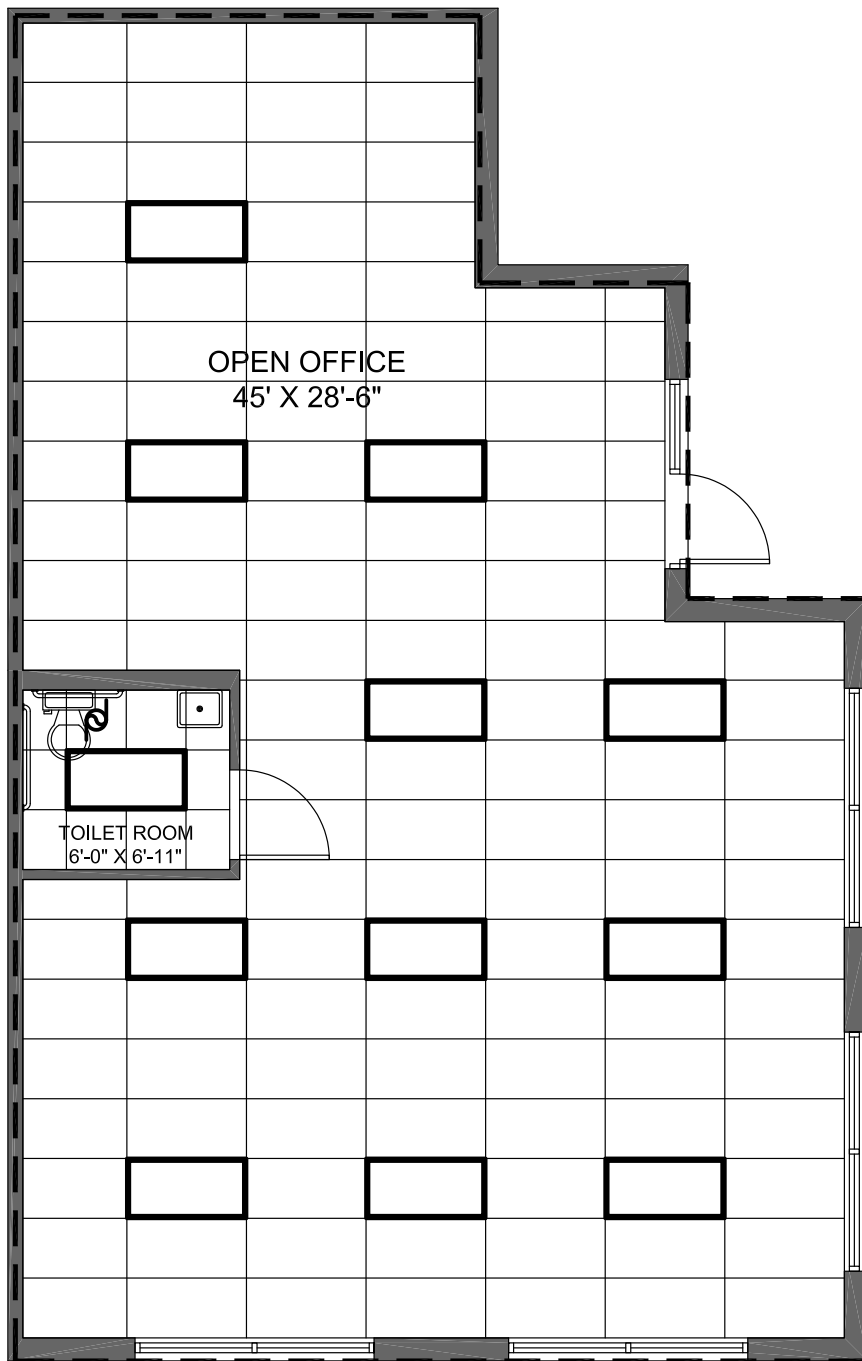
WestPark



PROFESSIONAL  
CENTER

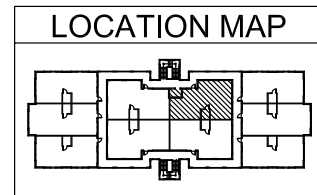
**BUILDING 2**  
**UNIT 203**  
( SECOND FLOOR )

1,150 S.F.

THE ABOVE DRAWING IS CONCEPTUAL ONLY AND IS SUBJECT TO CHANGE WITHOUT NOTICE AT THE DISCRETION OF THE DEVELOPER. THE DEVELOPER RESERVES THE RIGHT TO MAKE ADDITIONS, DELETIONS AND MODIFICATIONS TO THE DRAWINGS AS THE DEVELOPER MAY DEEM APPROPRIATE OR DESIRABLE. DIMENSIONS AND SQUARE FOOTAGE ARE APPROXIMATE AND MAY VARY WITH ACTUAL CONSTRUCTION.  
© 2005 KENNETH CARLSON ARCHITECT - P.A.



LEGEND	
	EXHAUST FAN
	2X4 GRID FIXTURE



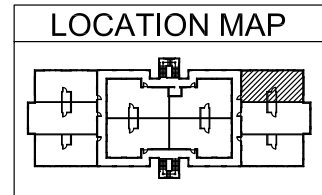
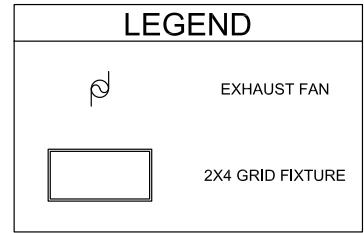
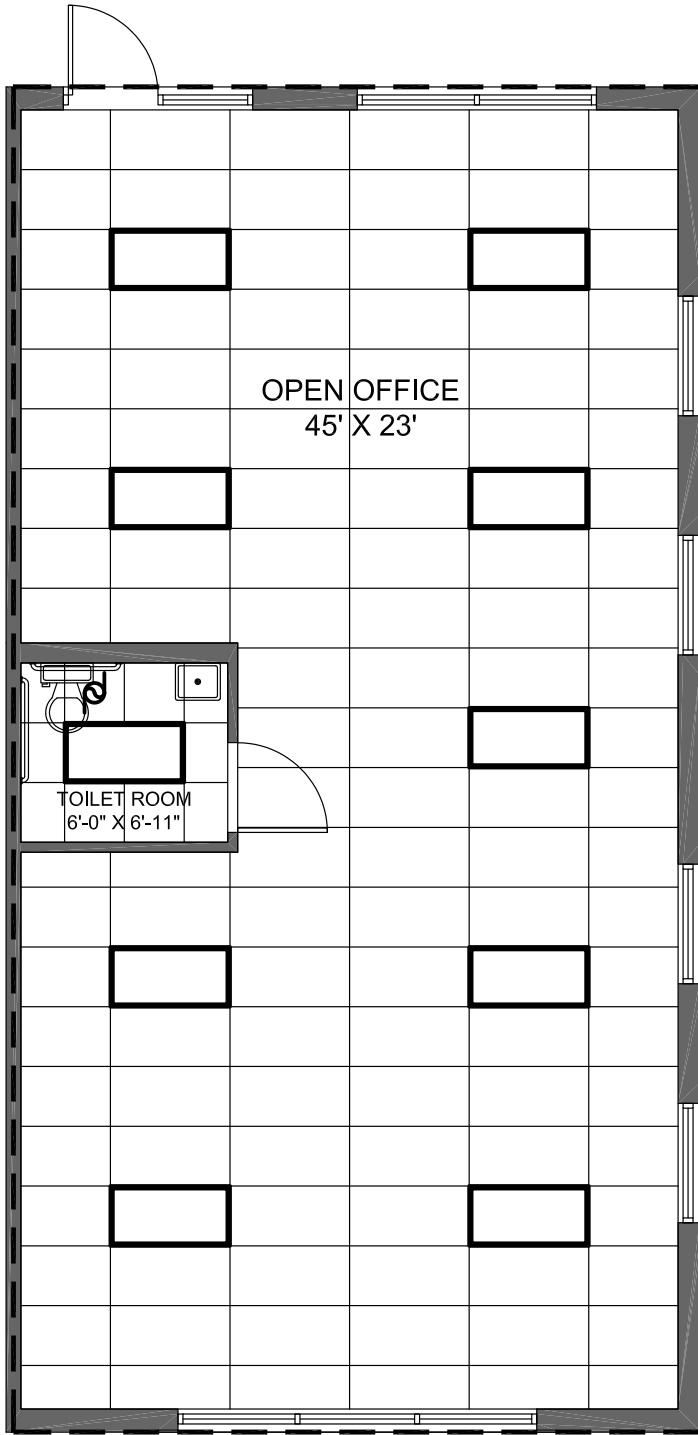
WestPark

PROFESSIONAL  
CENTER

**BUILDING 2**  
**UNIT 204**  
( SECOND FLOOR )

1,103 S.F.

THE ABOVE DRAWING IS CONCEPTUAL ONLY AND IS SUBJECT TO CHANGE WITHOUT NOTICE AT THE DISCRETION OF THE DEVELOPER. THE DEVELOPER RESERVES THE RIGHT TO MAKE ADDITIONS, DELETIONS AND MODIFICATIONS TO THE DRAWINGS AS THE DEVELOPER MAY DEEM APPROPRIATE OR DESIRABLE. DIMENSIONS AND SQUARE FOOTAGE ARE APPROXIMATE AND MAY VARY WITH ACTUAL CONSTRUCTION.  
© 2005 KENNETH CARLSON ARCHITECT - P.A.



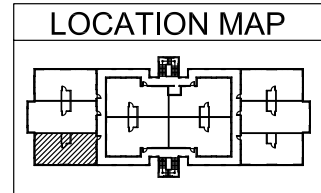
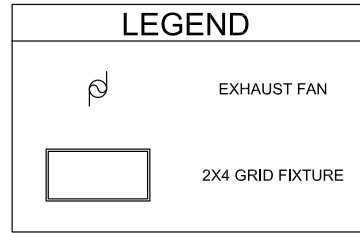
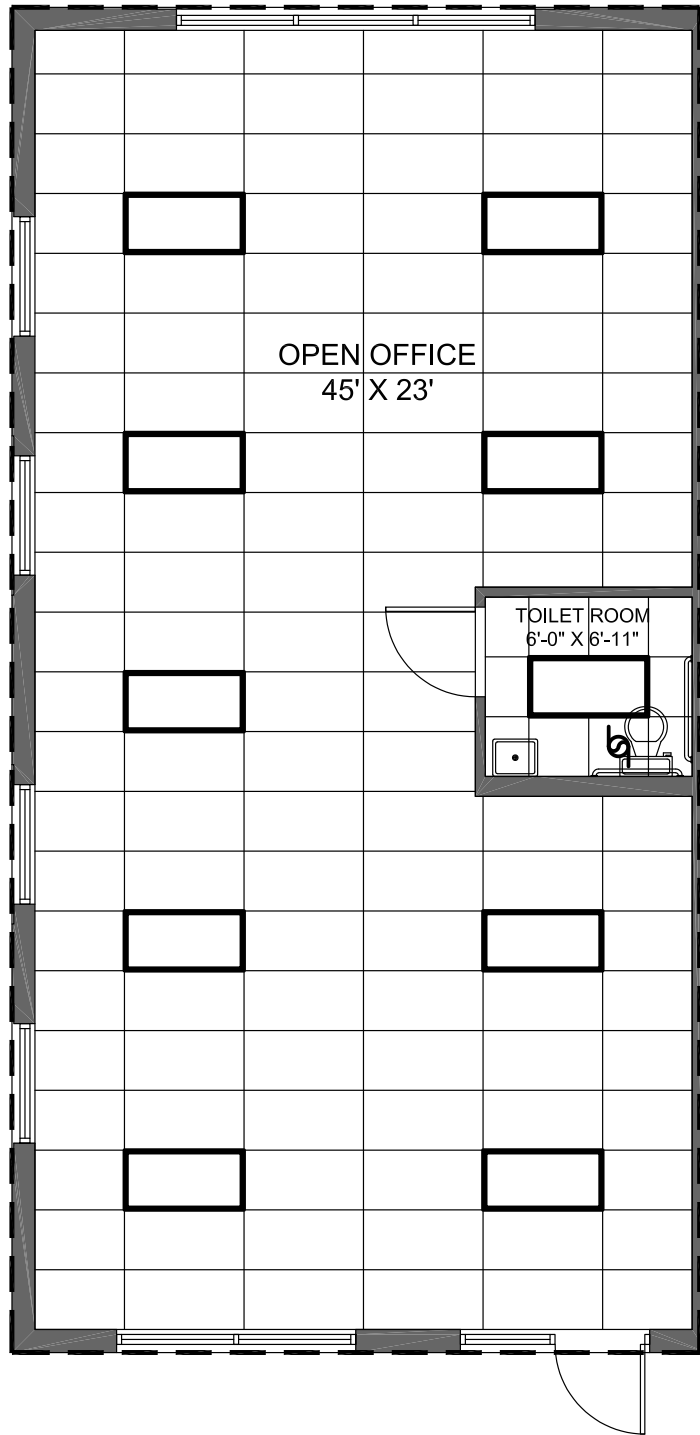
WestPark

PROFESSIONAL  
CENTER

**BUILDING 2**  
**UNIT 205**  
( SECOND FLOOR )

1,035 S.F.

THE ABOVE DRAWING IS CONCEPTUAL ONLY AND IS SUBJECT TO CHANGE WITHOUT NOTICE AT THE DISCRETION OF THE DEVELOPER. THE DEVELOPER RESERVES THE RIGHT TO MAKE ADDITIONS, DELETIONS AND MODIFICATIONS TO THE DRAWINGS AS THE DEVELOPER MAY DEEM APPROPRIATE OR DESIRABLE. DIMENSIONS AND SQUARE FOOTAGE ARE APPROXIMATE AND MAY VARY WITH ACTUAL CONSTRUCTION.  
© 2005 KENNETH CARLSON ARCHITECT - P.A.



WestPark

PROFESSIONAL  
CENTER


**BUILDING 2**  
**UNIT 206**  
( SECOND FLOOR )


1,035 S.F.

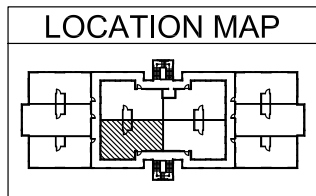
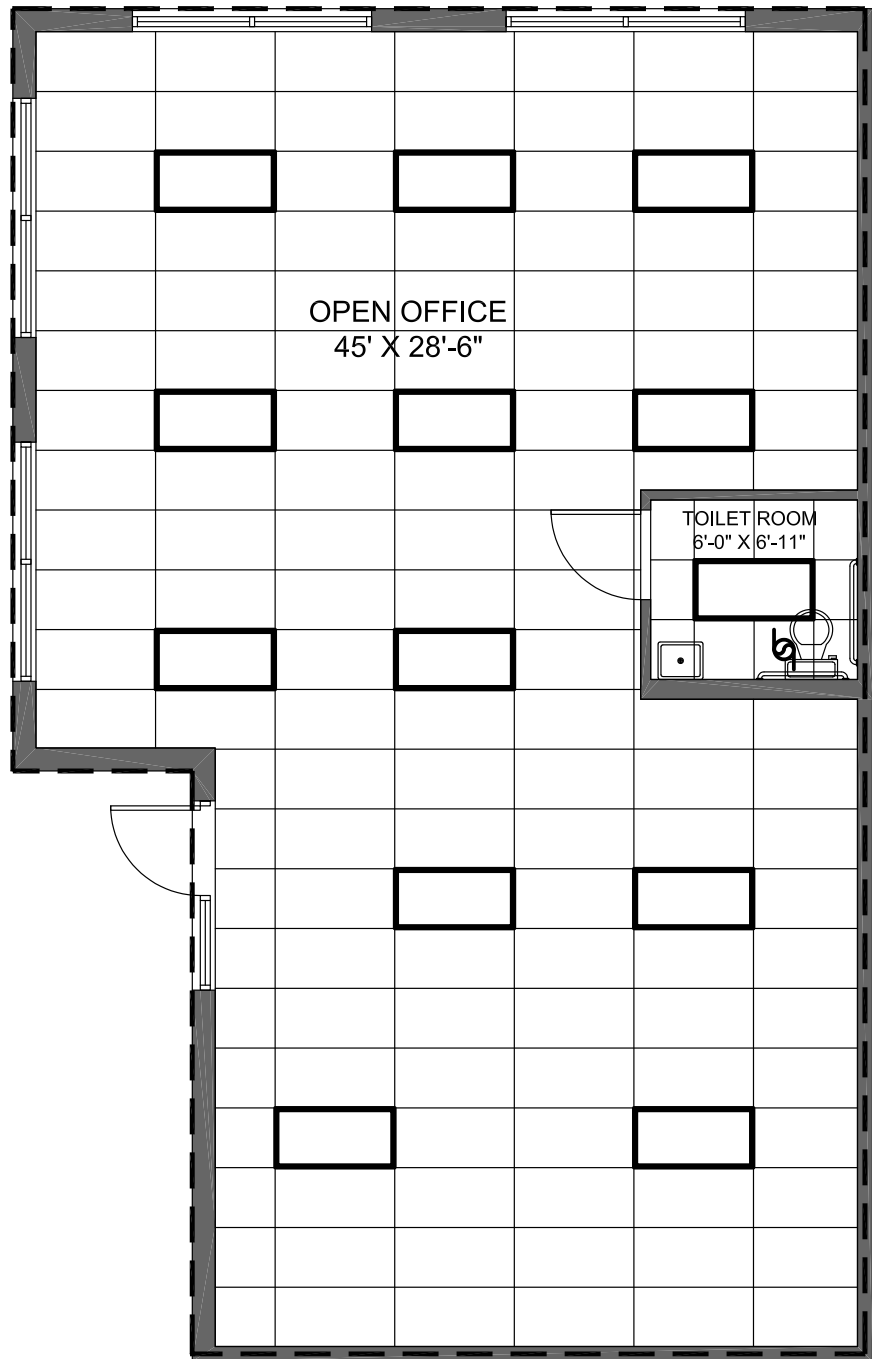
THE ABOVE DRAWING IS CONCEPTUAL ONLY AND IS SUBJECT TO CHANGE WITHOUT NOTICE AT THE DISCRETION OF THE DEVELOPER. THE DEVELOPER RESERVES THE RIGHT TO MAKE ADDITIONS, DELETIONS AND MODIFICATIONS TO THE DRAWINGS AS THE DEVELOPER MAY DEEM APPROPRIATE OR DESIRABLE. DIMENSIONS AND SQUARE FOOTAGE ARE APPROXIMATE AND MAY VARY WITH ACTUAL CONSTRUCTION.  
© 2005 KENNETH CARLSON ARCHITECT - P.A.



**LEGEND**

 EXHAUST FAN

 2X4 GRID FIXTURE



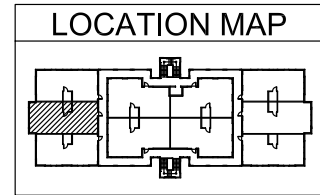
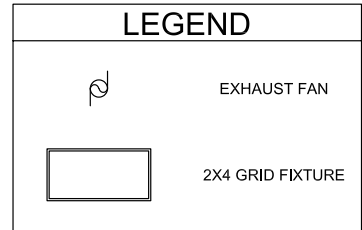
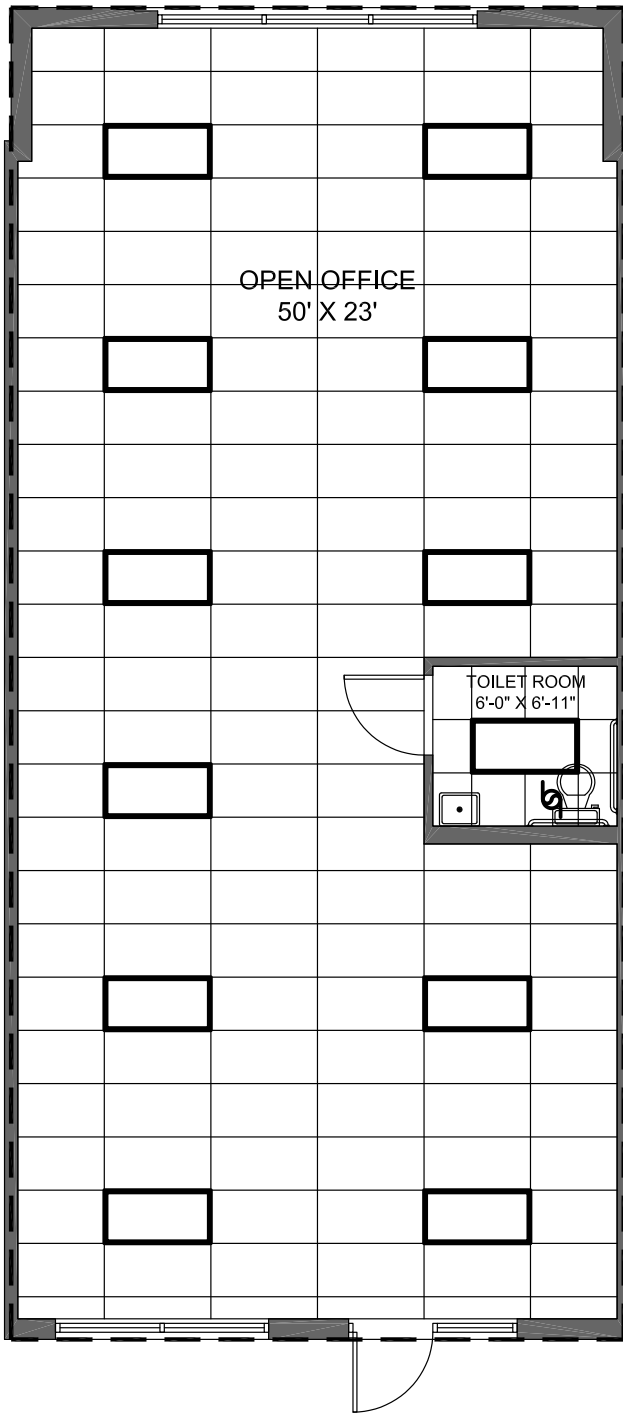
WestPark

PROFESSIONAL  
CENTER

**BUILDING 2**  
**UNIT 207**  
( SECOND FLOOR )

1,165 S.F.

THE ABOVE DRAWING IS CONCEPTUAL ONLY AND IS SUBJECT TO CHANGE WITHOUT NOTICE AT THE DISCRETION OF THE DEVELOPER. THE DEVELOPER RESERVES THE RIGHT TO MAKE ADDITIONS, DELETIONS AND MODIFICATIONS TO THE DRAWINGS AS THE DEVELOPER MAY DEEM APPROPRIATE OR DESIRABLE. DIMENSIONS AND SQUARE FOOTAGE ARE APPROXIMATE AND MAY VARY WITH ACTUAL CONSTRUCTION.  
© 2005 KENNETH CARLSON ARCHITECT - P.A.

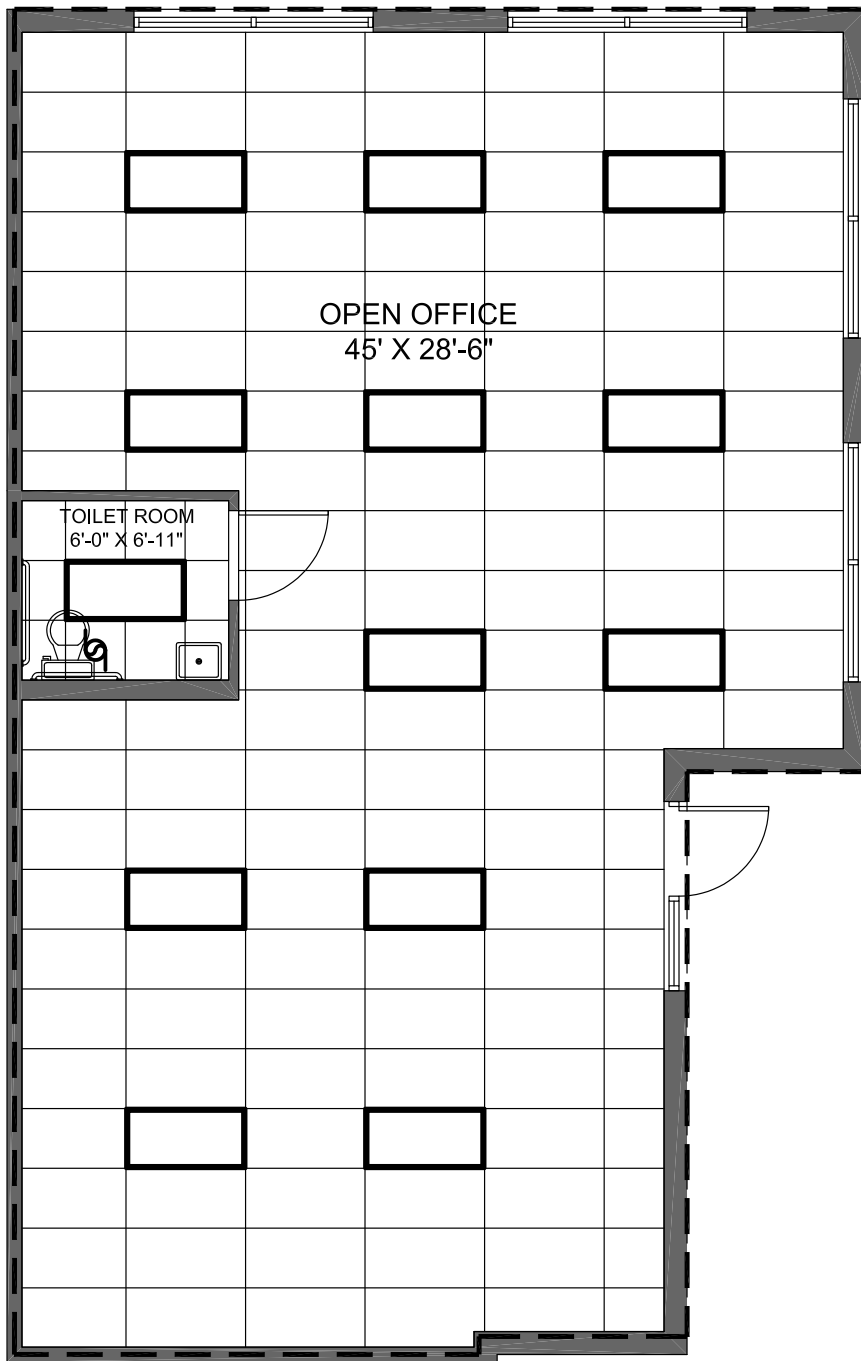




**WestPark**  
 PROFESSIONAL  
 CENTER

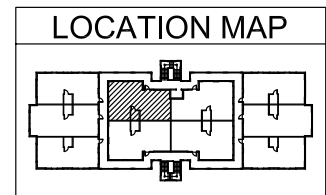
**BUILDING 2**  
**UNIT 208**  
 ( SECOND FLOOR )

1,150 S.F.

THE ABOVE DRAWING IS CONCEPTUAL ONLY AND IS SUBJECT TO CHANGE WITHOUT NOTICE AT THE DISCRETION OF THE DEVELOPER. THE DEVELOPER RESERVES THE RIGHT TO MAKE ADDITIONS, DELETIONS AND MODIFICATIONS TO THE DRAWINGS AS THE DEVELOPER MAY DEEM APPROPRIATE OR DESIRABLE. DIMENSIONS AND SQUARE FOOTAGE ARE APPROXIMATE AND MAY VARY WITH ACTUAL CONSTRUCTION.  
 © 2005 KENNETH CARLSON ARCHITECT - P.A.



LEGEND	
	EXHAUST FAN
	2X4 GRID FIXTURE



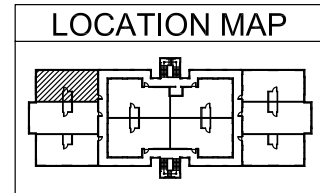
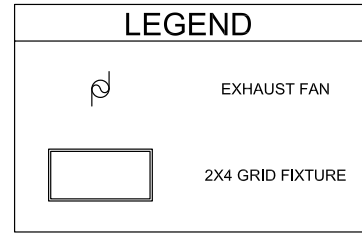
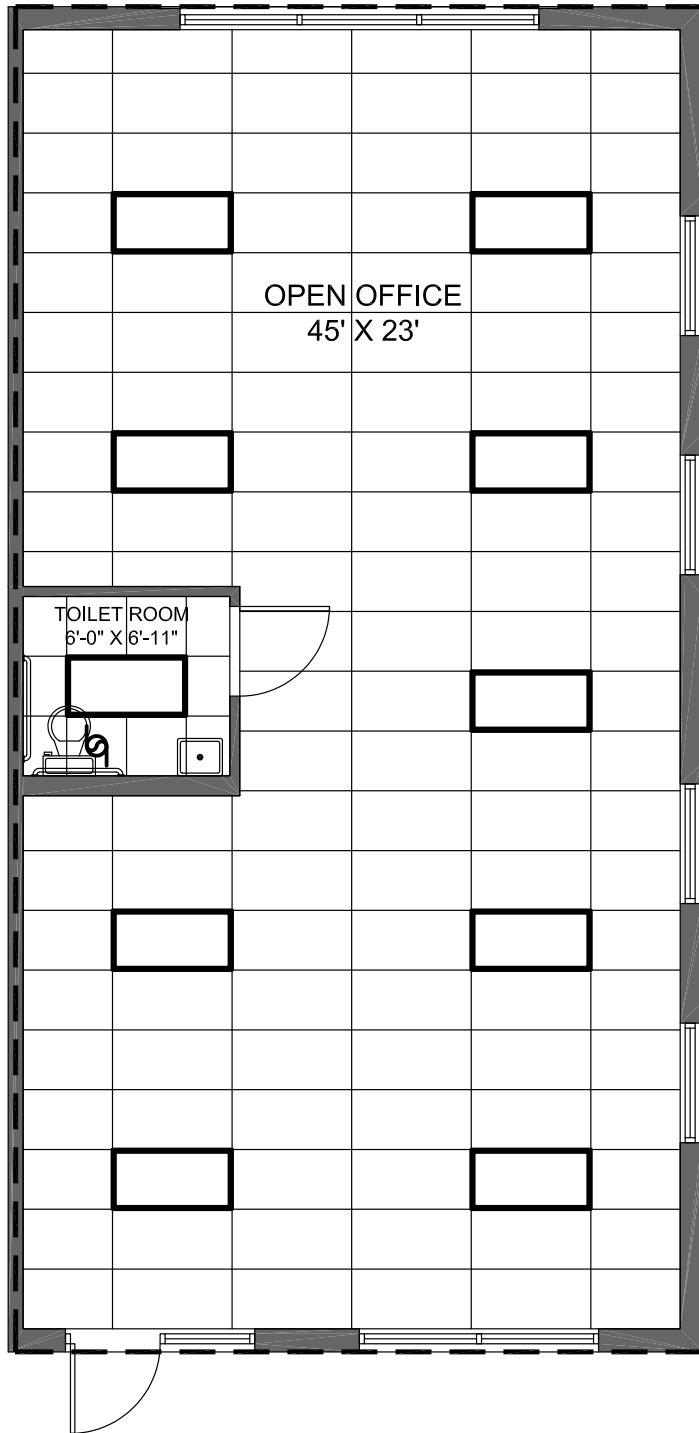
WestPark

PROFESSIONAL  
CENTER

**BUILDING 2**  
**UNIT 209**  
( SECOND FLOOR )

1,1161 S.F.

THE ABOVE DRAWING IS CONCEPTUAL ONLY AND IS SUBJECT TO CHANGE WITHOUT NOTICE AT THE DISCRETION OF THE DEVELOPER. THE DEVELOPER RESERVES THE RIGHT TO MAKE ADDITIONS, DELETIONS AND MODIFICATIONS TO THE DRAWINGS AS THE DEVELOPER MAY DEEM APPROPRIATE OR DESIRABLE. DIMENSIONS AND SQUARE FOOTAGE ARE APPROXIMATE AND MAY VARY WITH ACTUAL CONSTRUCTION.  
© 2005 KENNETH CARLSON ARCHITECT - P.A.



WestPark

PROFESSIONAL  
CENTER

**BUILDING 2**  
**UNIT 210**  
( SECOND FLOOR )

1,035 S.F.

THE ABOVE DRAWING IS CONCEPTUAL ONLY AND IS SUBJECT TO CHANGE WITHOUT NOTICE AT THE DISCRETION OF THE DEVELOPER. THE DEVELOPER RESERVES THE RIGHT TO MAKE ADDITIONS, DELETIONS AND MODIFICATIONS TO THE DRAWINGS AS THE DEVELOPER MAY DEEM APPROPRIATE OR DESIRABLE. DIMENSIONS AND SQUARE FOOTAGE ARE APPROXIMATE AND MAY VARY WITH ACTUAL CONSTRUCTION.  
© 2005 KENNETH CARLSON ARCHITECT - P.A.