

WestPark


PROFESSIONAL
CENTER


**BUILDING 3
UNIT 301**

2,424 S.F.

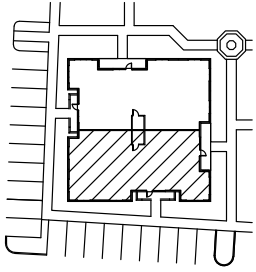
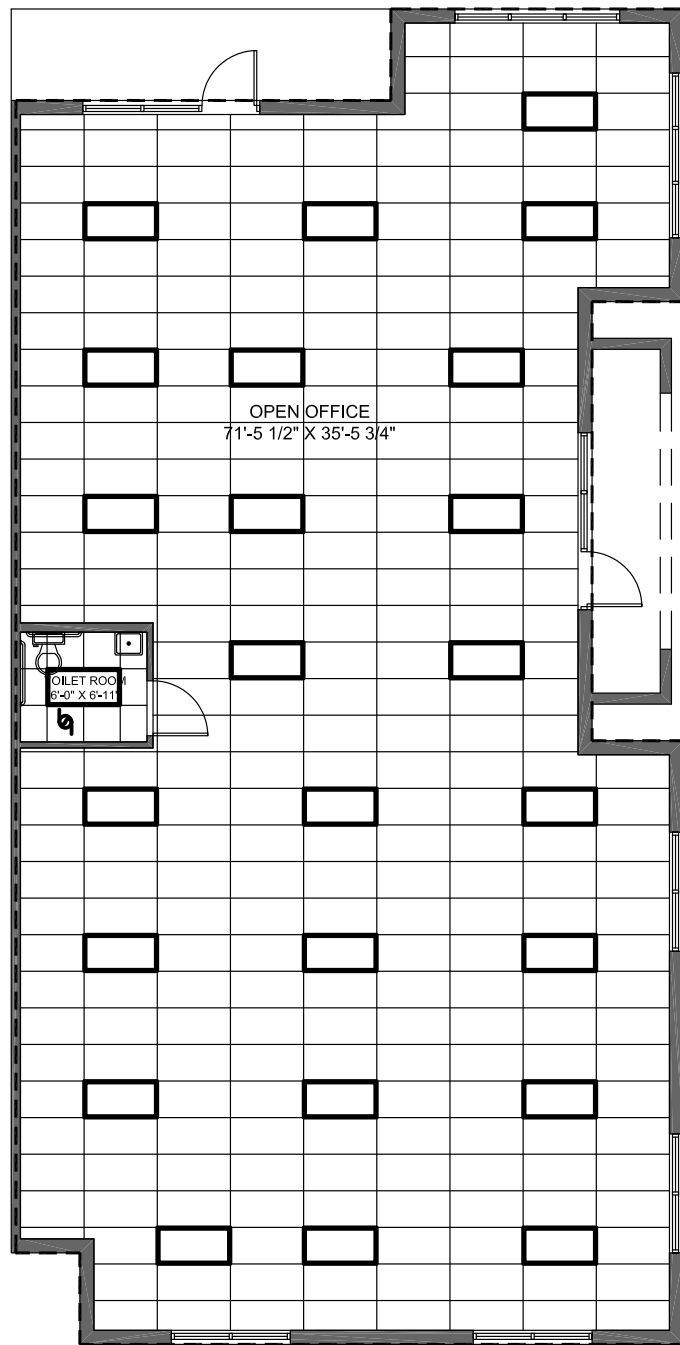
THE ABOVE DRAWING IS CONCEPTUAL ONLY AND IS SUBJECT TO CHANGE WITHOUT NOTICE AT THE DISCRETION OF THE DEVELOPER. THE DEVELOPER RESERVES THE RIGHT TO MAKE ADDITIONS, DELETIONS AND MODIFICATIONS TO THE DRAWINGS AS THE DEVELOPER MAY DEEM APPROPRIATE OR DESIRABLE. DIMENSIONS AND SQUARE FOOTAGE ARE APPROXIMATE AND MAY VARY WITH ACTUAL CONSTRUCTION.
© 2005 KENNETH CARLSON ARCHITECT - P.A.

LEGEND

 EXHAUST FAN

 2X4 GRID FIXTURE

LOCATION MAP

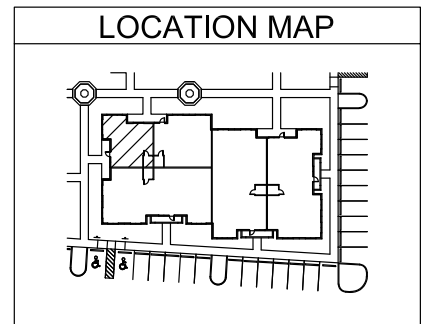
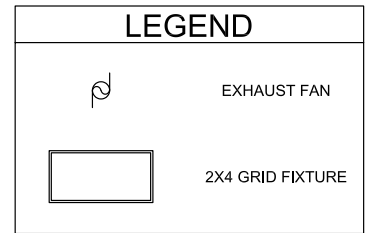
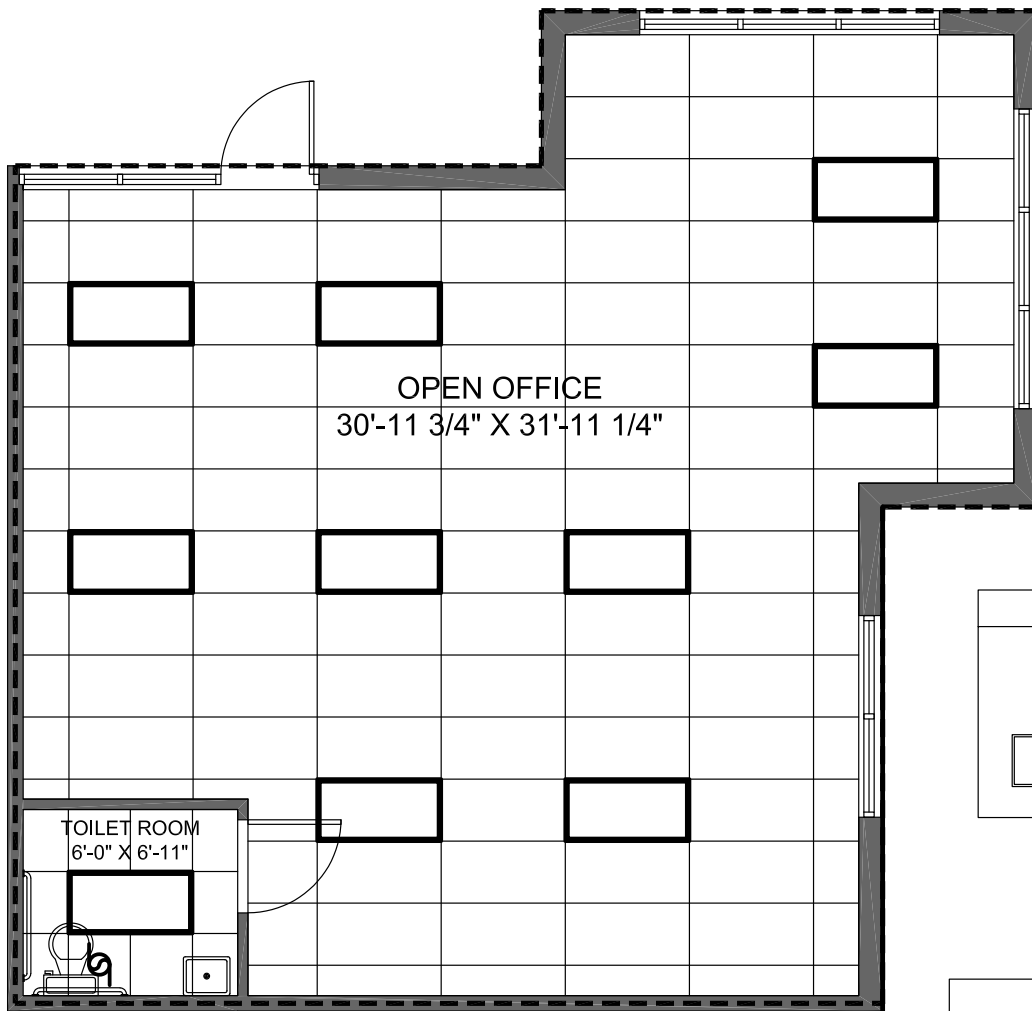
WestPark

PROFESSIONAL
CENTER

**BUILDING 3
UNIT 302**

2,424 S.F.

THE ABOVE DRAWING IS CONCEPTUAL ONLY AND IS SUBJECT TO CHANGE WITHOUT NOTICE AT THE DISCRETION OF THE DEVELOPER. THE DEVELOPER RESERVES THE RIGHT TO MAKE ADDITIONS, DELETIONS AND MODIFICATIONS TO THE DRAWINGS AS THE DEVELOPER MAY DEEM APPROPRIATE OR DESIRABLE. DIMENSIONS AND SQUARE FOOTAGE ARE APPROXIMATE AND MAY VARY WITH ACTUAL CONSTRUCTION.
© 2005 KENNETH CARLSON ARCHITECT - P.A.



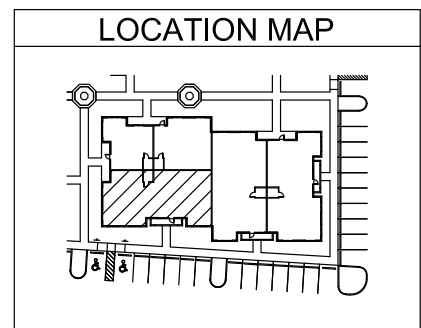
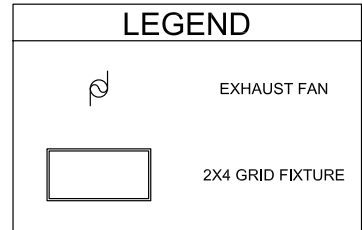
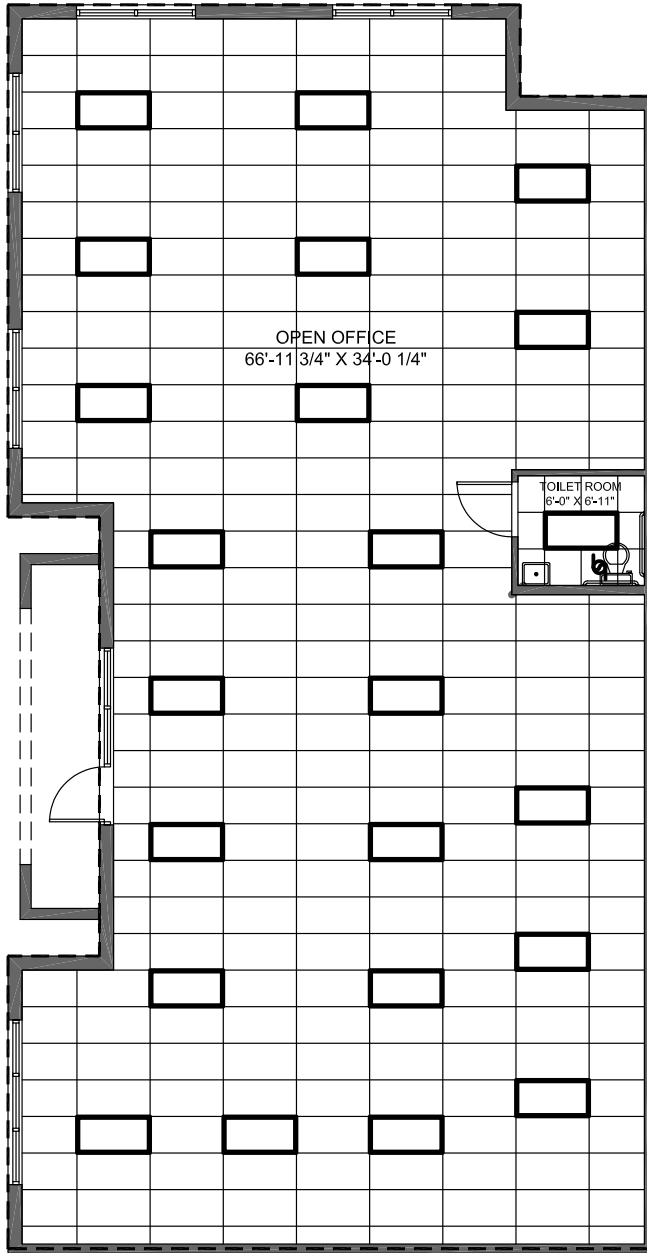
WestPark

PROFESSIONAL
CENTER

**BUILDING 4
UNIT 400**

889 S.F.

THE ABOVE DRAWING IS CONCEPTUAL ONLY AND IS SUBJECT TO CHANGE WITHOUT NOTICE AT THE DISCRETION OF THE DEVELOPER. THE DEVELOPER RESERVES THE RIGHT TO MAKE ADDITIONS, DELETIONS AND MODIFICATIONS TO THE DRAWINGS AS THE DEVELOPER MAY DEEM APPROPRIATE OR DESIRABLE. DIMENSIONS AND SQUARE FOOTAGE ARE APPROXIMATE AND MAY VARY WITH ACTUAL CONSTRUCTION.
© 2005 KENNETH CARLSON ARCHITECT - P.A.





WestPark

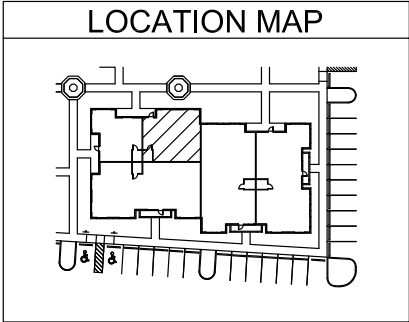
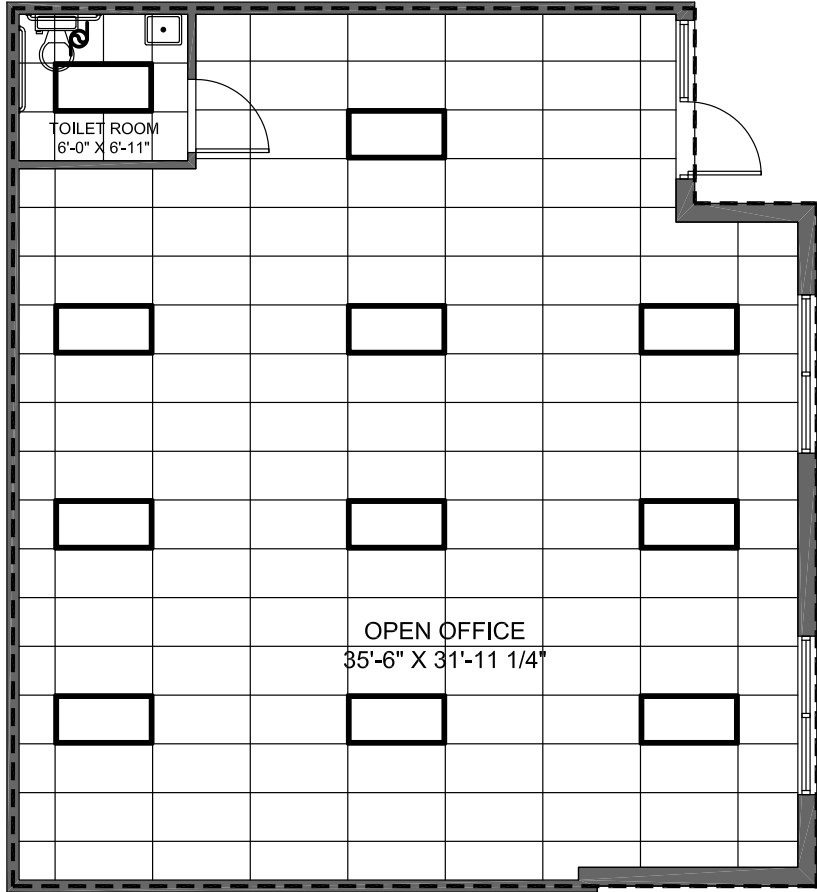
PROFESSIONAL
CENTER

BUILDING 4 UNIT 401

2,227 S.F.

THE ABOVE DRAWING IS CONCEPTUAL ONLY AND IS SUBJECT TO CHANGE WITHOUT NOTICE AT THE DISCRETION OF THE DEVELOPER. THE DEVELOPER RESERVES THE RIGHT TO MAKE ADDITIONS, DELETIONS AND MODIFICATIONS TO THE DRAWINGS AS THE DEVELOPER MAY DEEM APPROPRIATE OR DESIRABLE. DIMENSIONS AND SQUARE FOOTAGE ARE APPROXIMATE AND MAY VARY WITH ACTUAL CONSTRUCTION.
© 2005 KENNETH CARLSON ARCHITECT - P.A.

LEGEND	
	EXHAUST FAN
	2X4 GRID FIXTURE

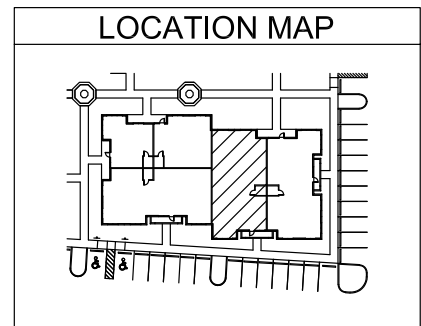
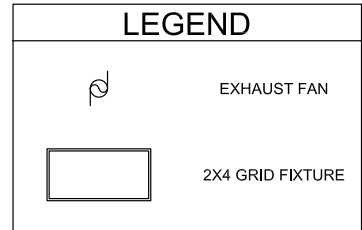
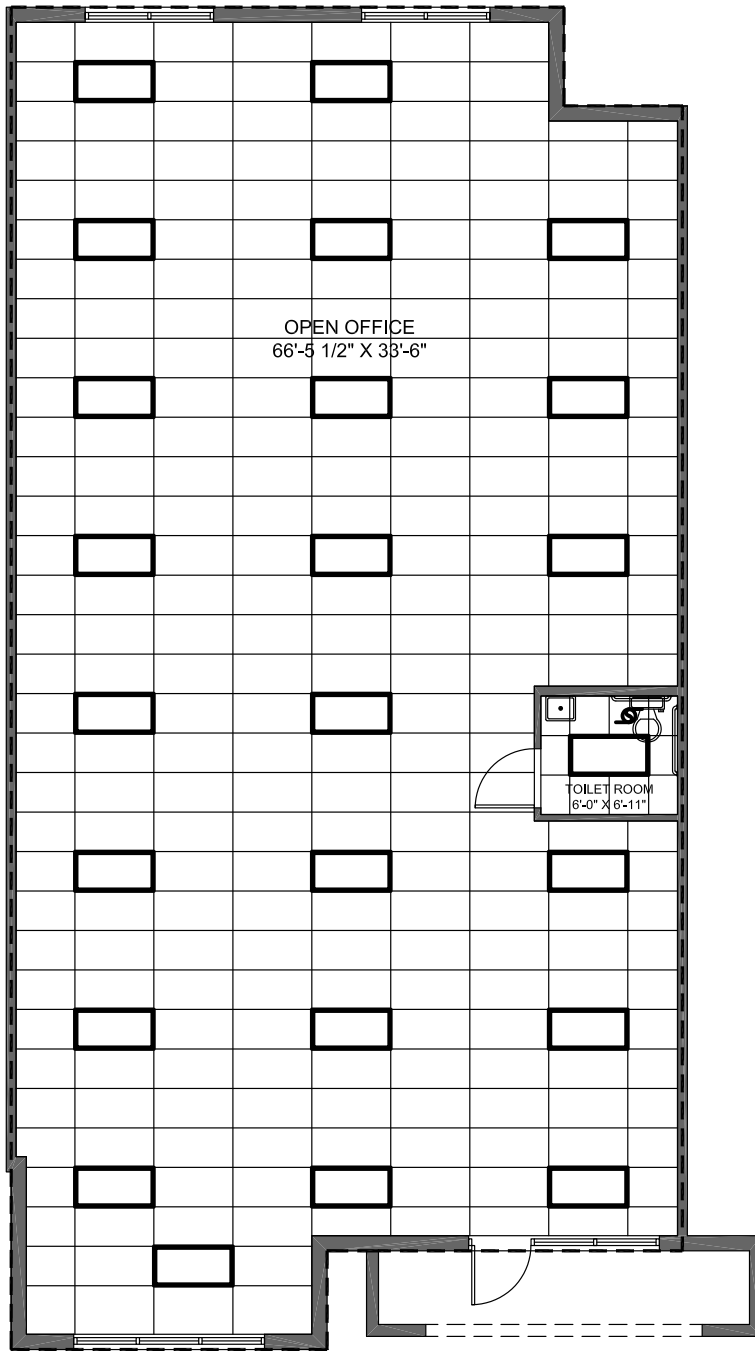


WestPark
PROFESSIONAL
CENTER

**BUILDING 4
UNIT 402**

1,146 S.F.

THE ABOVE DRAWING IS CONCEPTUAL ONLY AND IS SUBJECT TO CHANGE WITHOUT NOTICE AT THE DISCRETION OF THE DEVELOPER. THE DEVELOPER RESERVES THE RIGHT TO MAKE ADDITIONS, DELETIONS AND MODIFICATIONS TO THE DRAWINGS AS THE DEVELOPER MAY DEEM APPROPRIATE OR DESIRABLE. DIMENSIONS AND SQUARE FOOTAGE ARE APPROXIMATE AND MAY VARY WITH ACTUAL CONSTRUCTION.
© 2005 KENNETH CARLSON ARCHITECT - P.A.



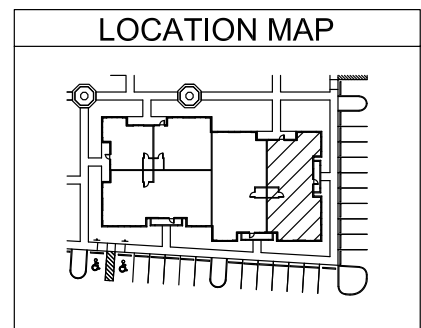
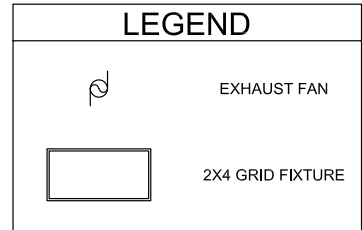
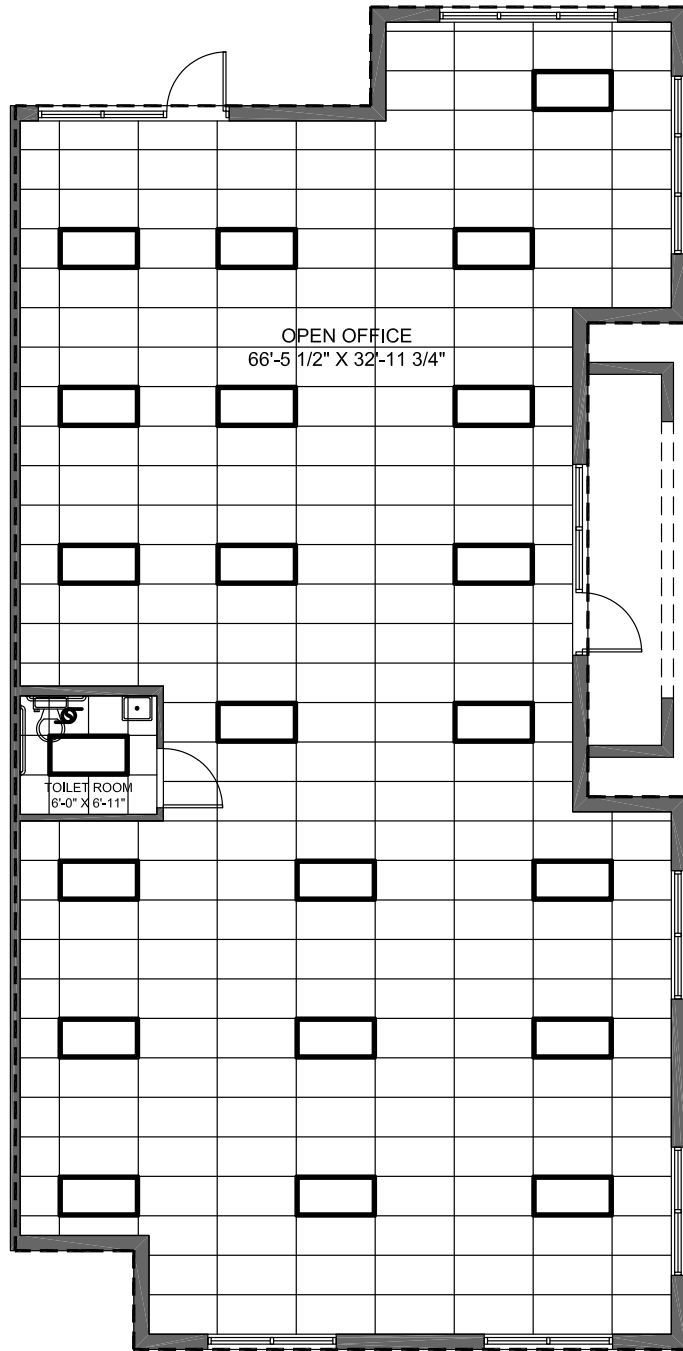
WestPark

PROFESSIONAL
CENTER

**BUILDING 4
UNIT 403**

2,192 S.F.

THE ABOVE DRAWING IS CONCEPTUAL ONLY AND IS SUBJECT TO CHANGE WITHOUT NOTICE AT THE DISCRETION OF THE DEVELOPER. THE DEVELOPER RESERVES THE RIGHT TO MAKE ADDITIONS, DELETIONS AND MODIFICATIONS TO THE DRAWINGS AS THE DEVELOPER MAY DEEM APPROPRIATE OR DESIRABLE. DIMENSIONS AND SQUARE FOOTAGE ARE APPROXIMATE AND MAY VARY WITH ACTUAL CONSTRUCTION.
© 2005 KENNETH CARLSON ARCHITECT - P.A.



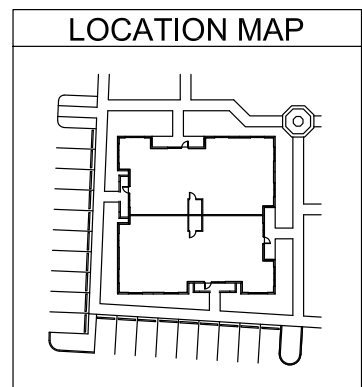
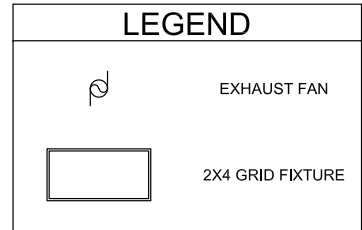
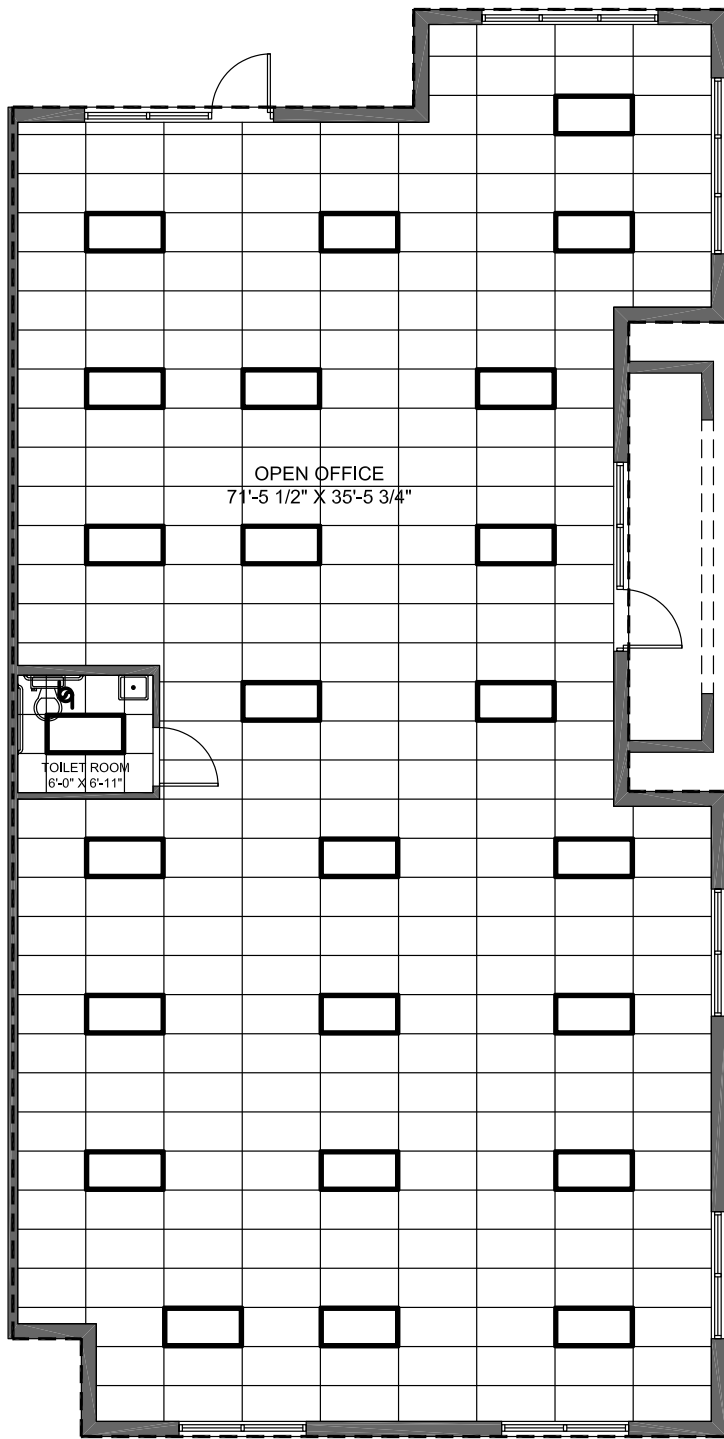
WestPark

PROFESSIONAL
CENTER

**BUILDING 4
UNIT 404**

2,072 S.F.

THE ABOVE DRAWING IS CONCEPTUAL ONLY AND IS SUBJECT TO CHANGE WITHOUT NOTICE AT THE DISCRETION OF THE DEVELOPER. THE DEVELOPER RESERVES THE RIGHT TO MAKE ADDITIONS, DELETIONS AND MODIFICATIONS TO THE DRAWINGS AS THE DEVELOPER MAY DEEM APPROPRIATE OR DESIRABLE. DIMENSIONS AND SQUARE FOOTAGE ARE APPROXIMATE AND MAY VARY WITH ACTUAL CONSTRUCTION.
© 2005 KENNETH CARLSON ARCHITECT - P.A.



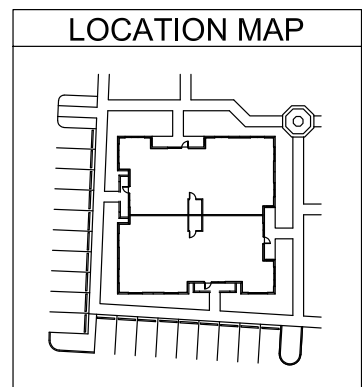
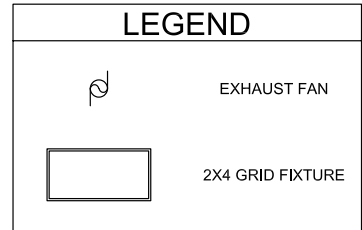
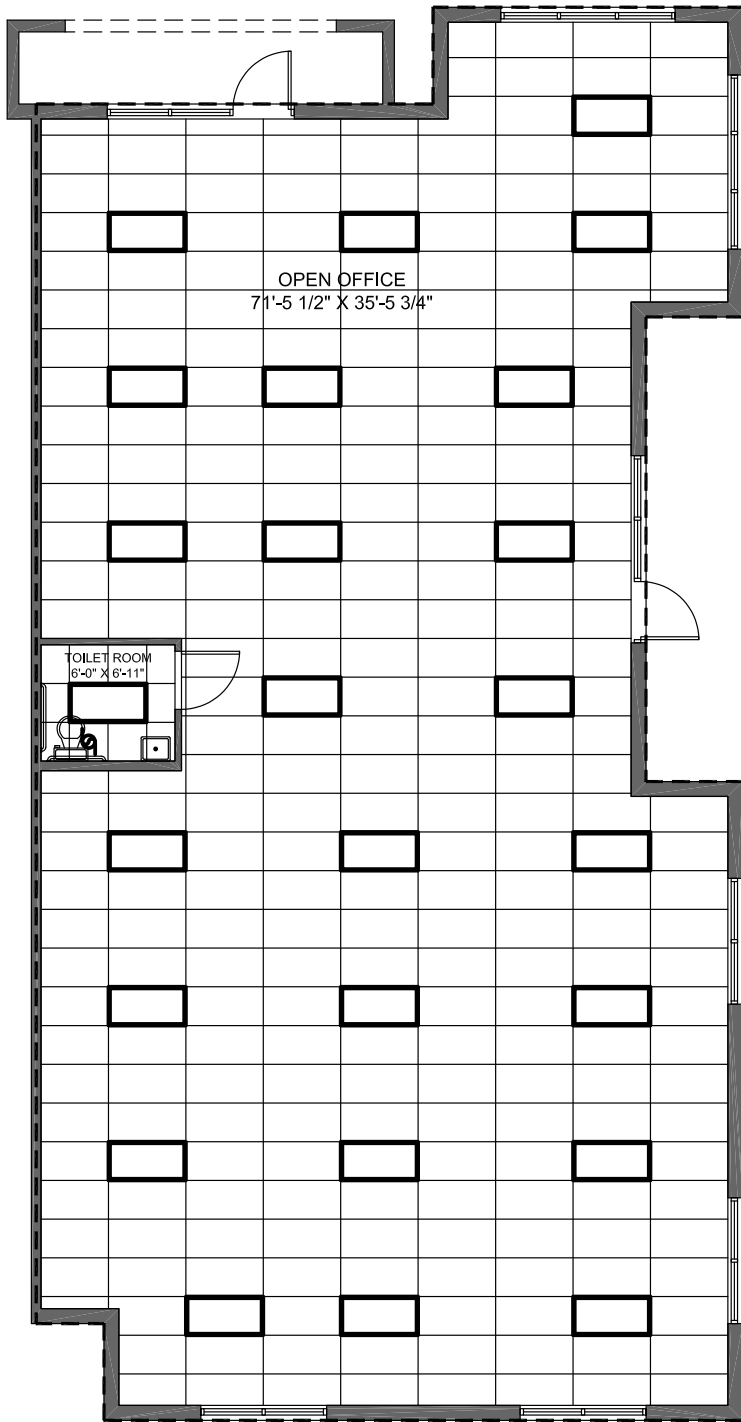
WestPark

PROFESSIONAL
CENTER

**BUILDING 7
UNIT 701**

2,424 S.F.

THE ABOVE DRAWING IS CONCEPTUAL ONLY AND IS SUBJECT TO CHANGE WITHOUT NOTICE AT THE DISCRETION OF THE DEVELOPER. THE DEVELOPER RESERVES THE RIGHT TO MAKE ADDITIONS, DELETIONS AND MODIFICATIONS TO THE DRAWINGS AS THE DEVELOPER MAY DEEM APPROPRIATE OR DESIRABLE. DIMENSIONS AND SQUARE FOOTAGE ARE APPROXIMATE AND MAY VARY WITH ACTUAL CONSTRUCTION.
© 2005 KENNETH CARLSON ARCHITECT - P.A.

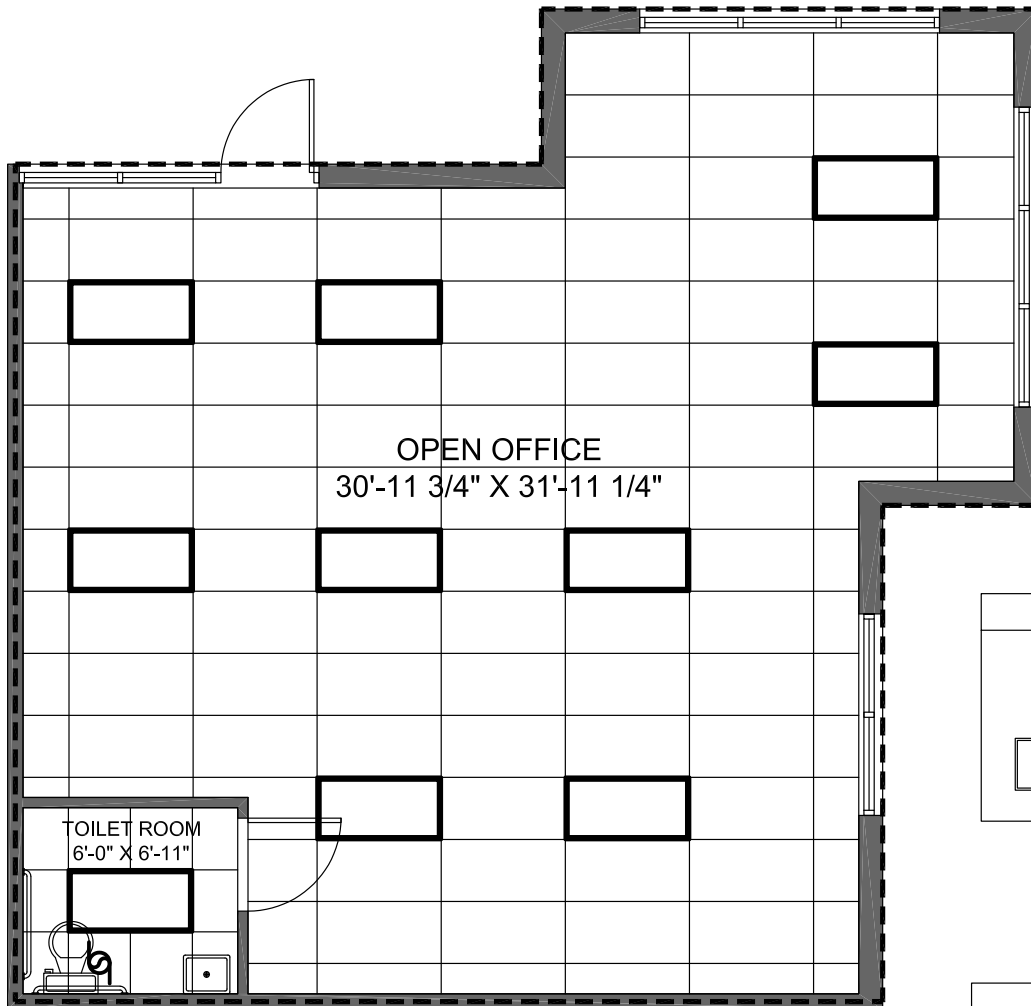


WestPark
PROFESSIONAL
CENTER

BUILDING 7 UNIT 702

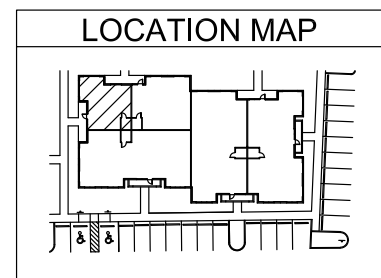
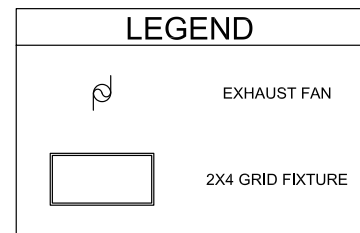
2,424 S.F.

THE ABOVE DRAWING IS CONCEPTUAL ONLY AND IS SUBJECT TO CHANGE WITHOUT NOTICE AT THE DISCRETION OF THE DEVELOPER. THE DEVELOPER RESERVES THE RIGHT TO MAKE ADDITIONS, DELETIONS AND MODIFICATIONS TO THE DRAWINGS AS THE DEVELOPER MAY DEEM APPROPRIATE OR DESIRABLE. DIMENSIONS AND SQUARE FOOTAGE ARE APPROXIMATE AND MAY VARY WITH ACTUAL CONSTRUCTION.
© 2005 KENNETH CARLSON ARCHITECT - P.A.



OPEN OFFICE
30'-11 3/4" X 31'-11 1/4"

TOILET ROOM
6'-0" X 6'-11"



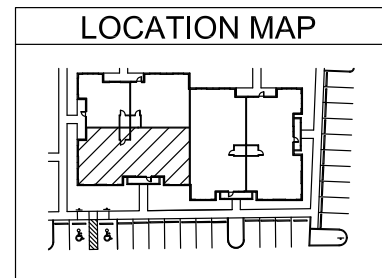
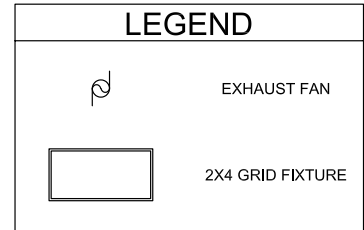
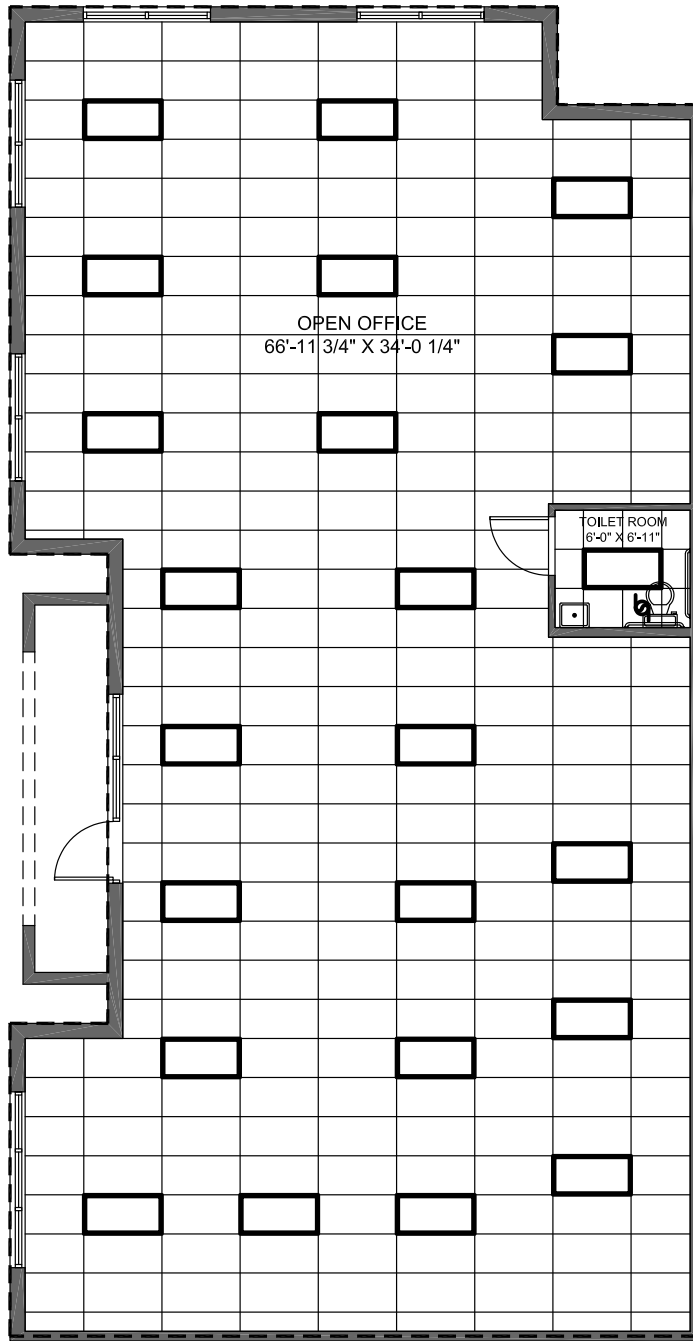
WestPark

PROFESSIONAL
CENTER

BUILDING 8 UNIT 800

889 S.F.

THE ABOVE DRAWING IS CONCEPTUAL ONLY AND IS SUBJECT TO CHANGE WITHOUT NOTICE AT THE DISCRETION OF THE DEVELOPER. THE DEVELOPER RESERVES THE RIGHT TO MAKE ADDITIONS, DELETIONS AND MODIFICATIONS TO THE DRAWINGS AS THE DEVELOPER MAY DEEM APPROPRIATE OR DESIRABLE. DIMENSIONS AND SQUARE FOOTAGE ARE APPROXIMATE AND MAY VARY WITH ACTUAL CONSTRUCTION.
© 2005 KENNETH CARLSON ARCHITECT - P.A.

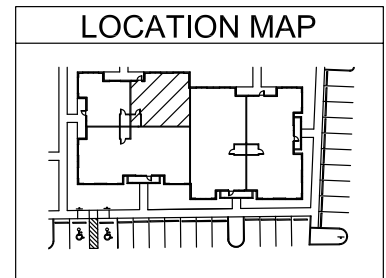
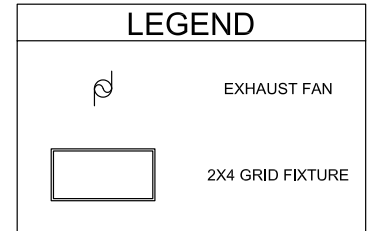
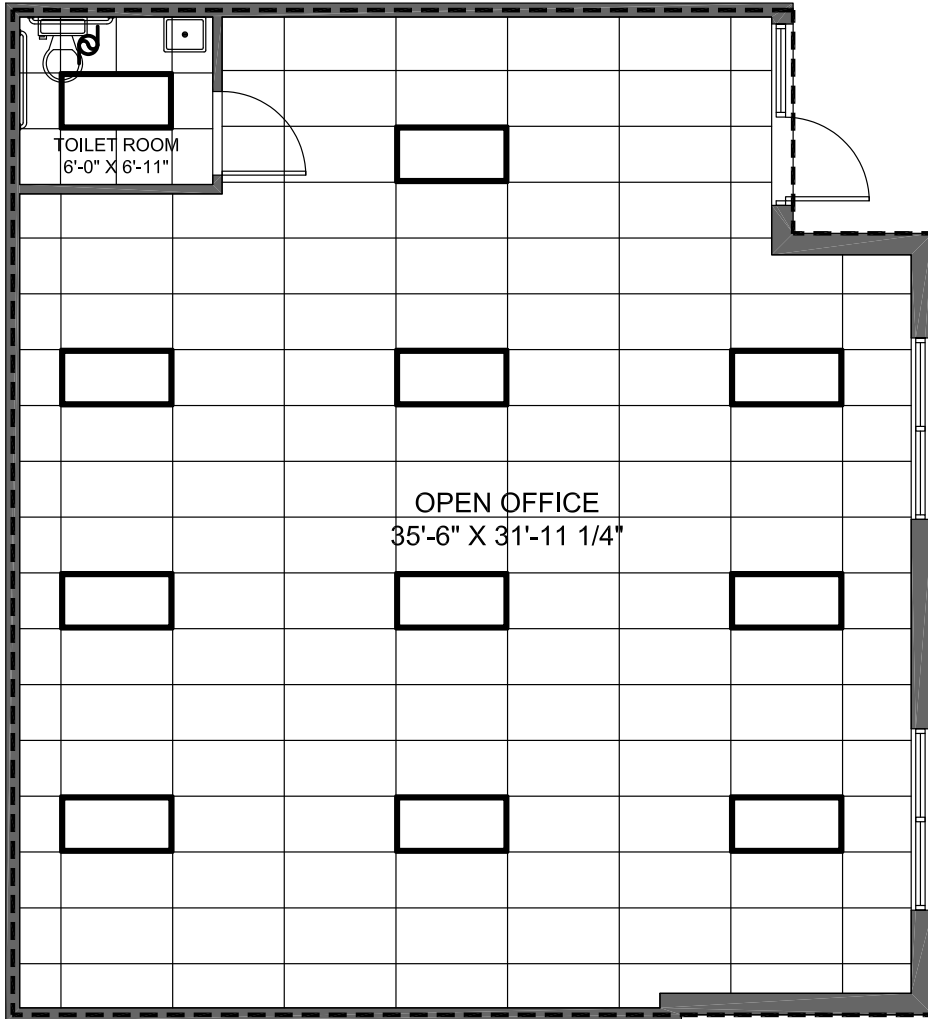


WestPark
 PROFESSIONAL
 CENTER

BUILDING 8 **UNIT 801**

2,227 S.F.

THE ABOVE DRAWING IS CONCEPTUAL ONLY AND IS SUBJECT TO CHANGE WITHOUT NOTICE AT THE DISCRETION OF THE DEVELOPER. THE DEVELOPER RESERVES THE RIGHT TO MAKE ADDITIONS, DELETIONS AND MODIFICATIONS TO THE DRAWINGS AS THE DEVELOPER MAY DEEM APPROPRIATE OR DESIRABLE. DIMENSIONS AND SQUARE FOOTAGE ARE APPROXIMATE AND MAY VARY WITH ACTUAL CONSTRUCTION.
 © 2005 KENNETH CARLSON ARCHITECT - P.A.



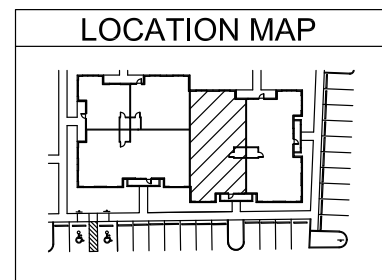
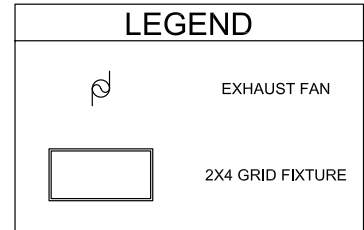
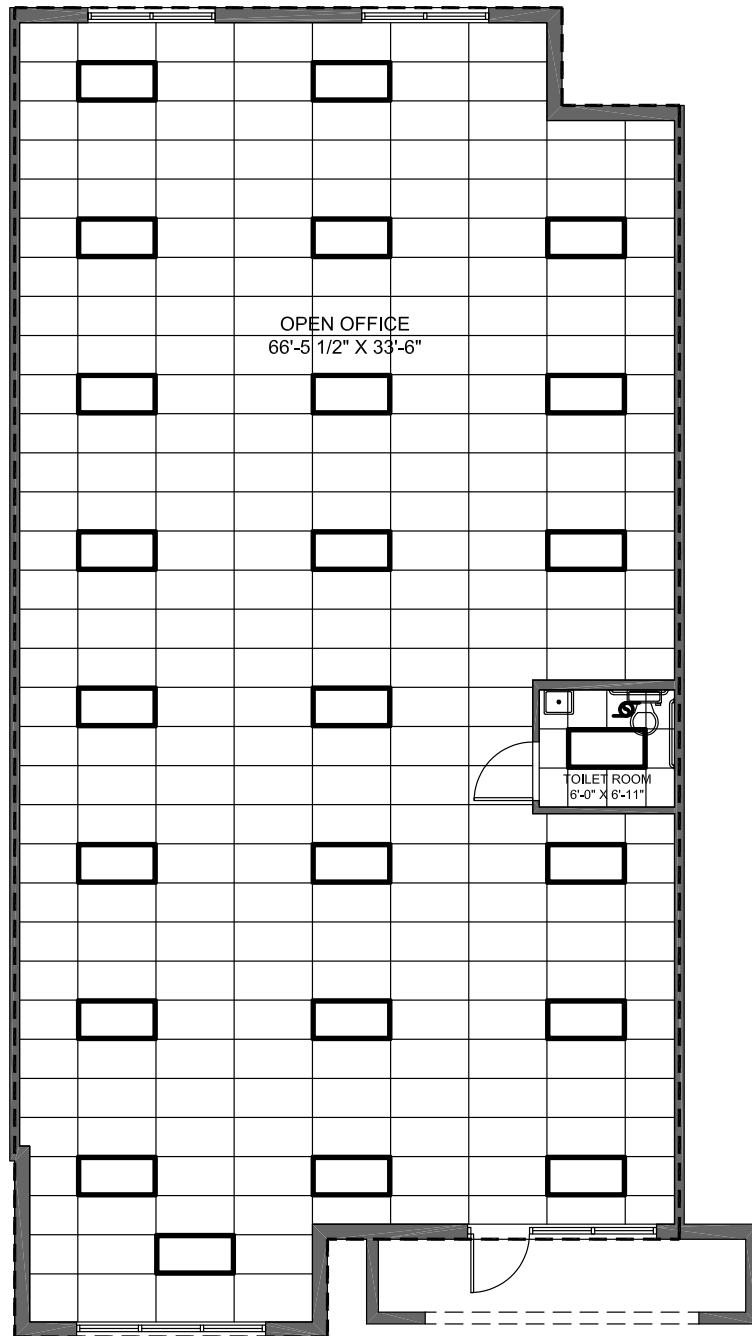
WestPark

PROFESSIONAL
CENTER

**BUILDING 8
UNIT 802**

1,146 S.F.

THE ABOVE DRAWING IS CONCEPTUAL ONLY AND IS SUBJECT TO CHANGE WITHOUT NOTICE AT THE DISCRETION OF THE DEVELOPER. THE DEVELOPER RESERVES THE RIGHT TO MAKE ADDITIONS, DELETIONS AND MODIFICATIONS TO THE DRAWINGS AS THE DEVELOPER MAY DEEM APPROPRIATE OR DESIRABLE. DIMENSIONS AND SQUARE FOOTAGE ARE APPROXIMATE AND MAY VARY WITH ACTUAL CONSTRUCTION.
© 2005 KENNETH CARLSON ARCHITECT - P.A.



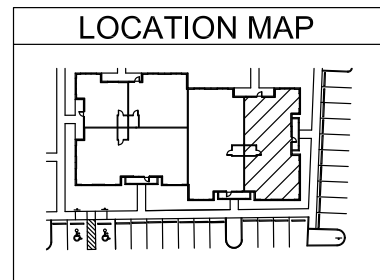
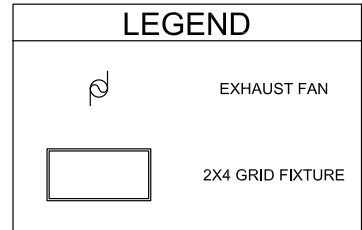
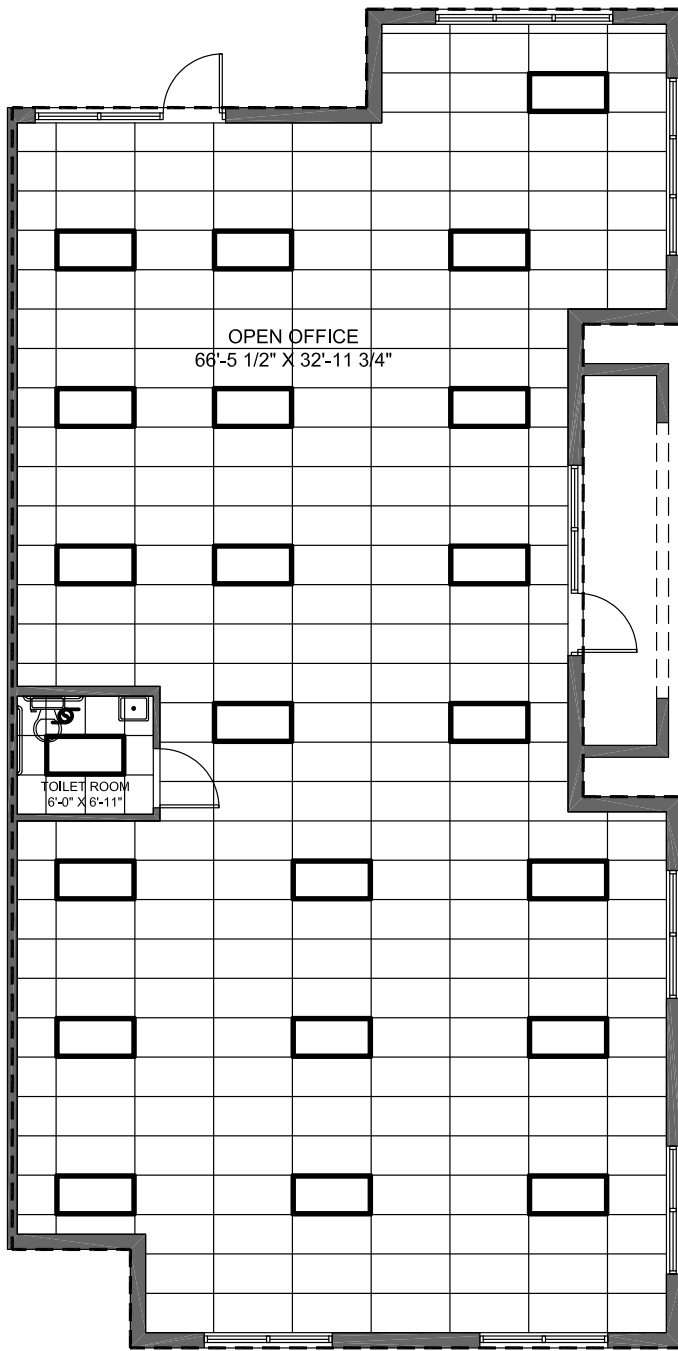
WestPark

PROFESSIONAL
CENTER

BUILDING 8 UNIT 803

2,192 S.F.

THE ABOVE DRAWING IS CONCEPTUAL ONLY AND IS SUBJECT TO CHANGE WITHOUT NOTICE AT THE DISCRETION OF THE DEVELOPER. THE DEVELOPER RESERVES THE RIGHT TO MAKE ADDITIONS, DELETIONS AND MODIFICATIONS TO THE DRAWINGS AS THE DEVELOPER MAY DEEM APPROPRIATE OR DESIRABLE. DIMENSIONS AND SQUARE FOOTAGE ARE APPROXIMATE AND MAY VARY WITH ACTUAL CONSTRUCTION.
© 2005 KENNETH CARLSON ARCHITECT - P.A.



WestPark

PROFESSIONAL
CENTER

BUILDING 8 UNIT 804

2,072 S.F.

THE ABOVE DRAWING IS CONCEPTUAL ONLY AND IS SUBJECT TO CHANGE WITHOUT NOTICE AT THE DISCRETION OF THE DEVELOPER. THE DEVELOPER RESERVES THE RIGHT TO MAKE ADDITIONS, DELETIONS AND MODIFICATIONS TO THE DRAWINGS AS THE DEVELOPER MAY DEEM APPROPRIATE OR DESIRABLE. DIMENSIONS AND SQUARE FOOTAGE ARE APPROXIMATE AND MAY VARY WITH ACTUAL CONSTRUCTION.
© 2005 KENNETH CARLSON ARCHITECT - P.A.