

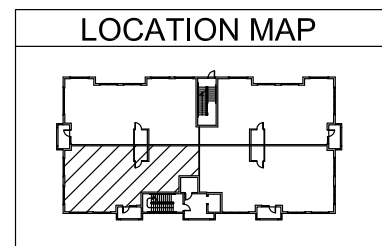
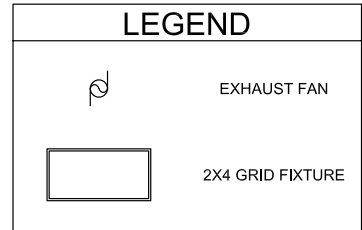
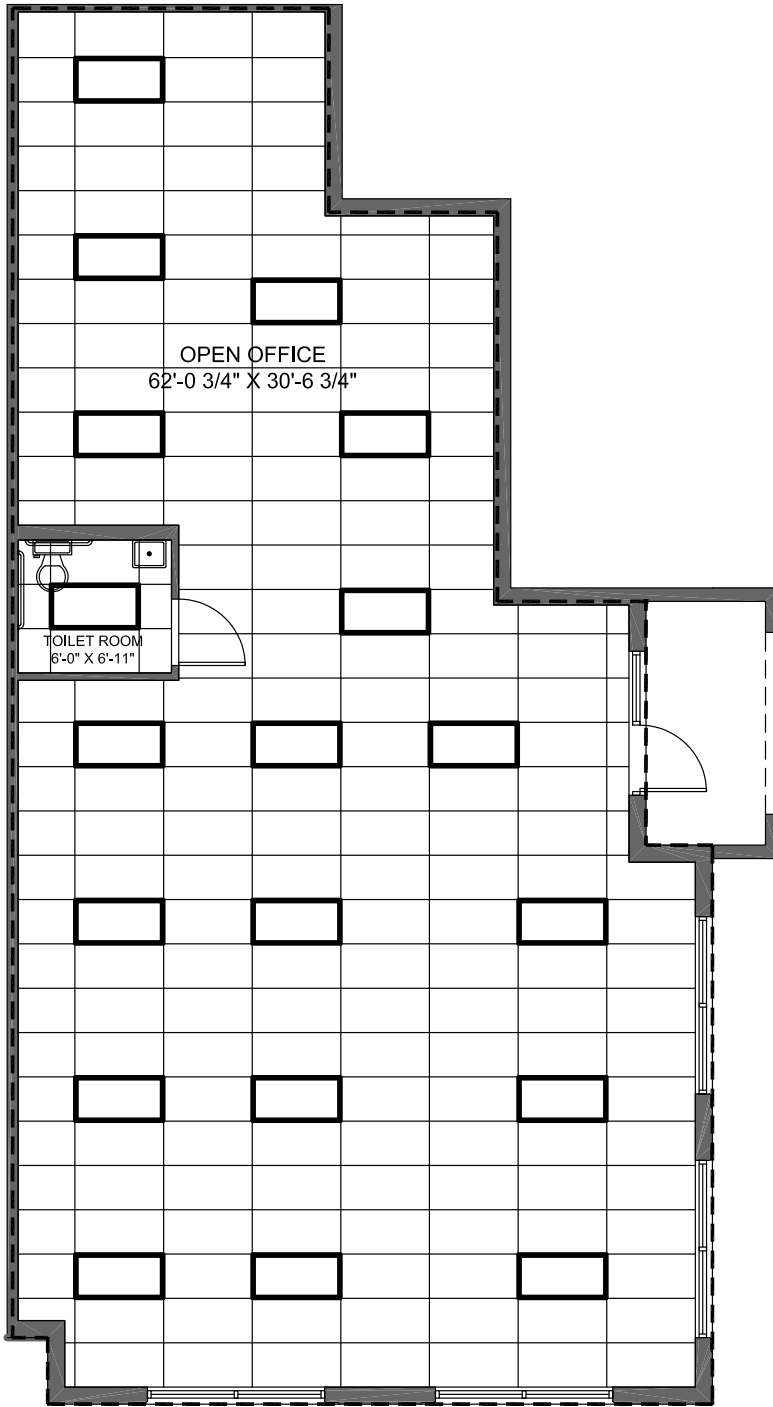
WestPark

PROFESSIONAL
CENTER

**BUILDING 5
UNIT 501**

1,852 S.F.

THE ABOVE DRAWING IS CONCEPTUAL ONLY AND IS SUBJECT TO CHANGE WITHOUT NOTICE AT THE DISCRETION OF THE DEVELOPER. THE DEVELOPER RESERVES THE RIGHT TO MAKE ADDITIONS, DELETIONS AND MODIFICATIONS TO THE DRAWINGS AS THE DEVELOPER MAY DEEM APPROPRIATE OR DESIRABLE. DIMENSIONS AND SQUARE FOOTAGE ARE APPROXIMATE AND MAY VARY WITH ACTUAL CONSTRUCTION.
© 2005 KENNETH CARLSON ARCHITECT - P.A.



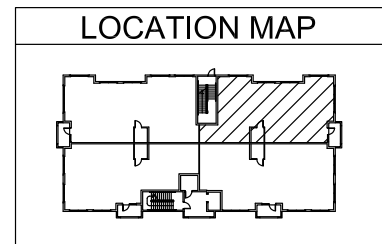
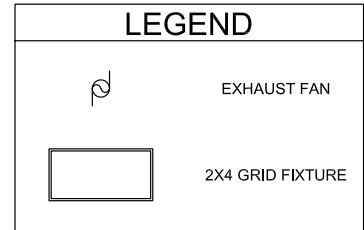
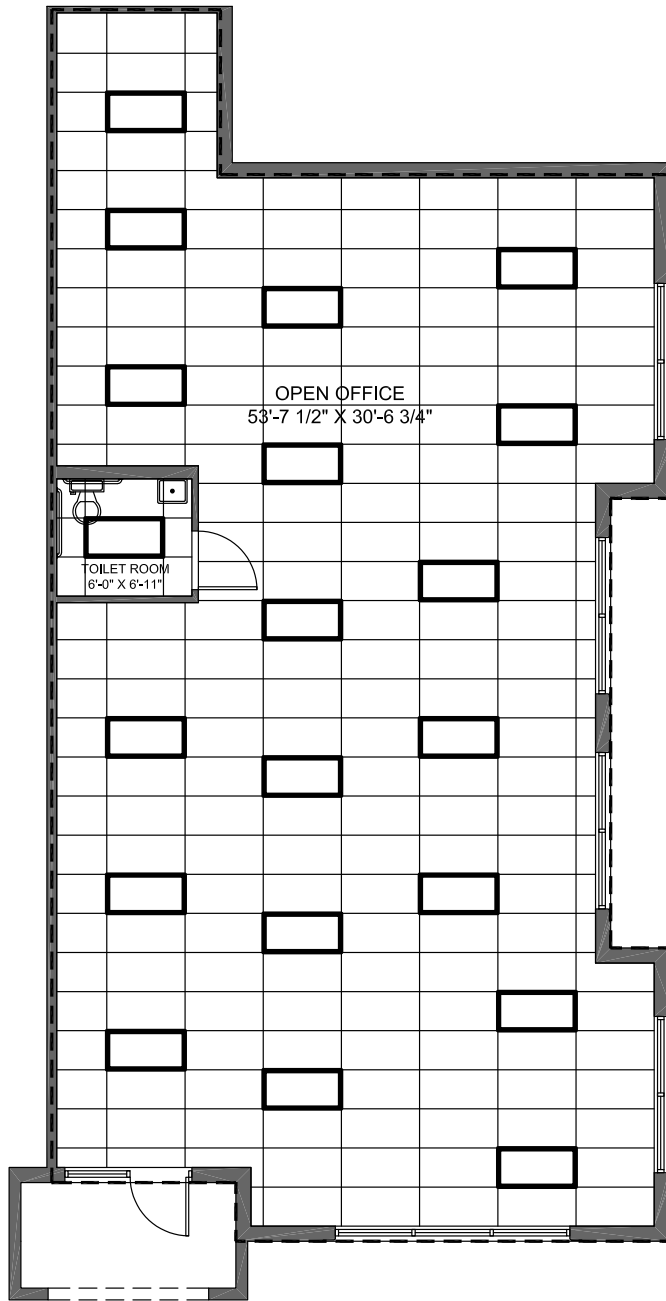
WestPark

PROFESSIONAL
CENTER

**BUILDING 5
UNIT 502**

1,622 S.F.

THE ABOVE DRAWING IS CONCEPTUAL ONLY AND IS SUBJECT TO CHANGE WITHOUT NOTICE AT THE DISCRETION OF THE DEVELOPER. THE DEVELOPER RESERVES THE RIGHT TO MAKE ADDITIONS, DELETIONS AND MODIFICATIONS TO THE DRAWINGS AS THE DEVELOPER MAY DEEM APPROPRIATE OR DESIRABLE. DIMENSIONS AND SQUARE FOOTAGE ARE APPROXIMATE AND MAY VARY WITH ACTUAL CONSTRUCTION.
 © 2005 KENNETH CARLSON ARCHITECT - P.A.



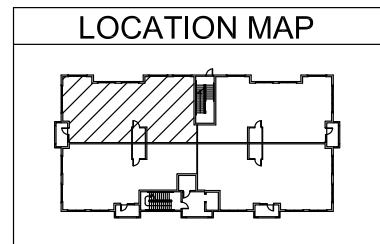
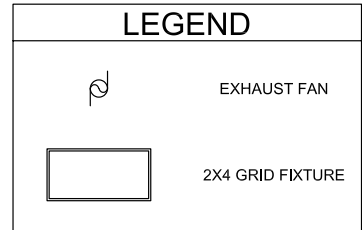
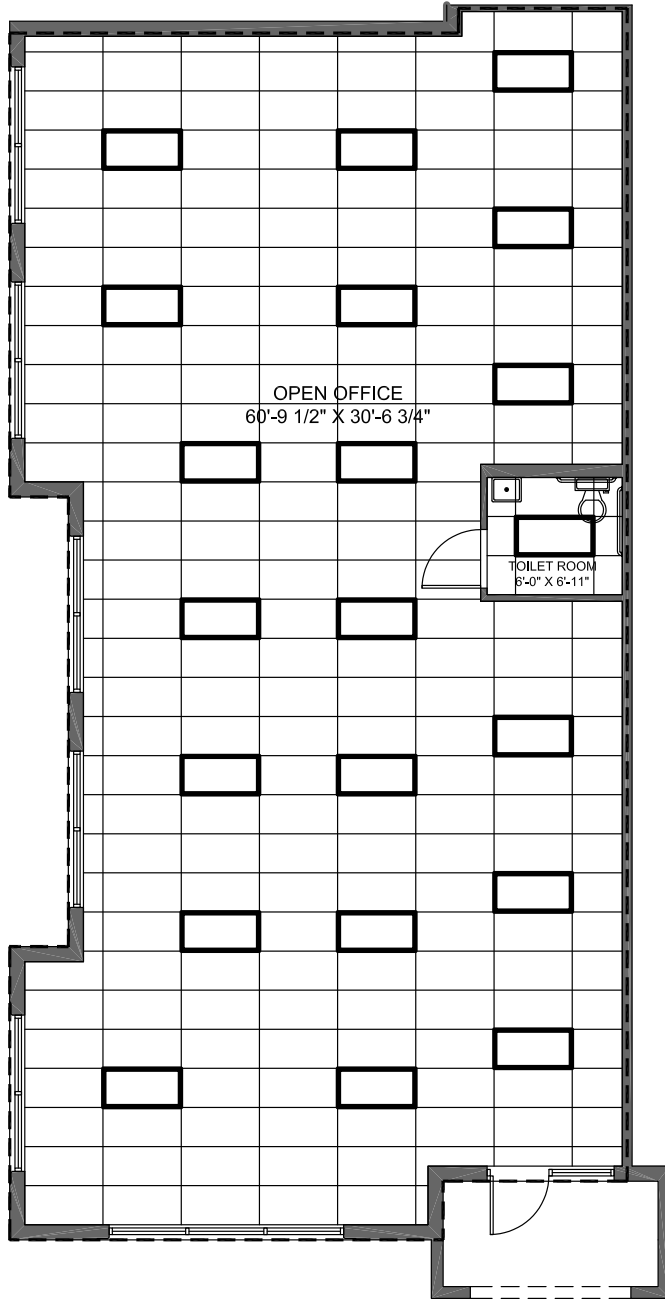
WestPark

PROFESSIONAL
CENTER

**BUILDING 5
UNIT 503**

1,698 S.F.

THE ABOVE DRAWING IS CONCEPTUAL ONLY AND IS SUBJECT TO CHANGE WITHOUT NOTICE AT THE DISCRETION OF THE DEVELOPER. THE DEVELOPER RESERVES THE RIGHT TO MAKE ADDITIONS, DELETIONS AND MODIFICATIONS TO THE DRAWINGS AS THE DEVELOPER MAY DEEM APPROPRIATE OR DESIRABLE. DIMENSIONS AND SQUARE FOOTAGE ARE APPROXIMATE AND MAY VARY WITH ACTUAL CONSTRUCTION.
© 2005 KENNETH CARLSON ARCHITECT - P.A.

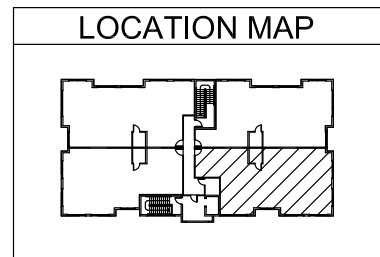
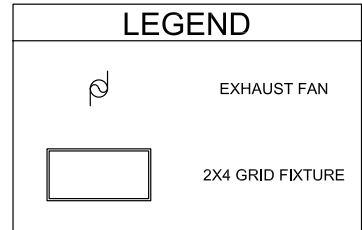
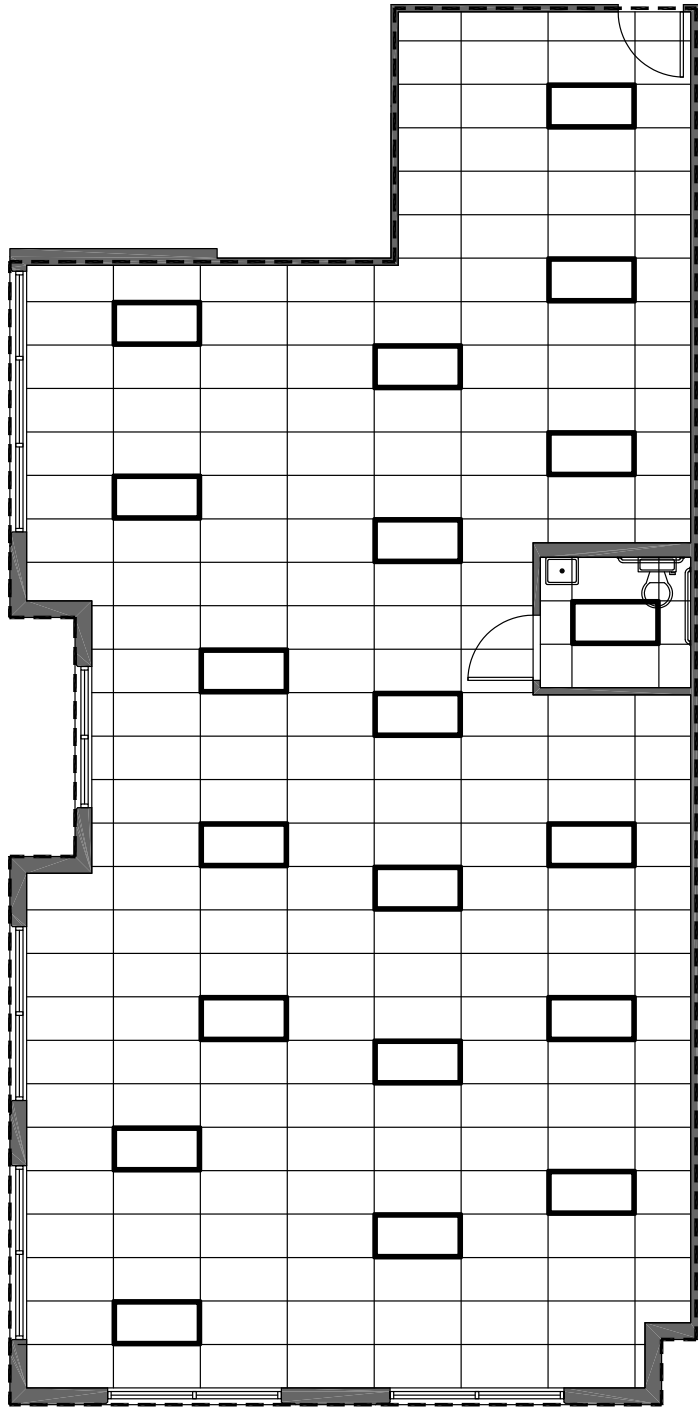


WestPark
 PROFESSIONAL
 CENTER

BUILDING 5
UNIT 504

1,863 S.F.

THE ABOVE DRAWING IS CONCEPTUAL ONLY AND IS SUBJECT TO CHANGE WITHOUT NOTICE AT THE DISCRETION OF THE DEVELOPER. THE DEVELOPER RESERVES THE RIGHT TO MAKE ADDITIONS, DELETIONS AND MODIFICATIONS TO THE DRAWINGS AS THE DEVELOPER MAY DEEM APPROPRIATE OR DESIRABLE. DIMENSIONS AND SQUARE FOOTAGE ARE APPROXIMATE AND MAY VARY WITH ACTUAL CONSTRUCTION.
 © 2005 KENNETH CARLSON ARCHITECT - P.A.



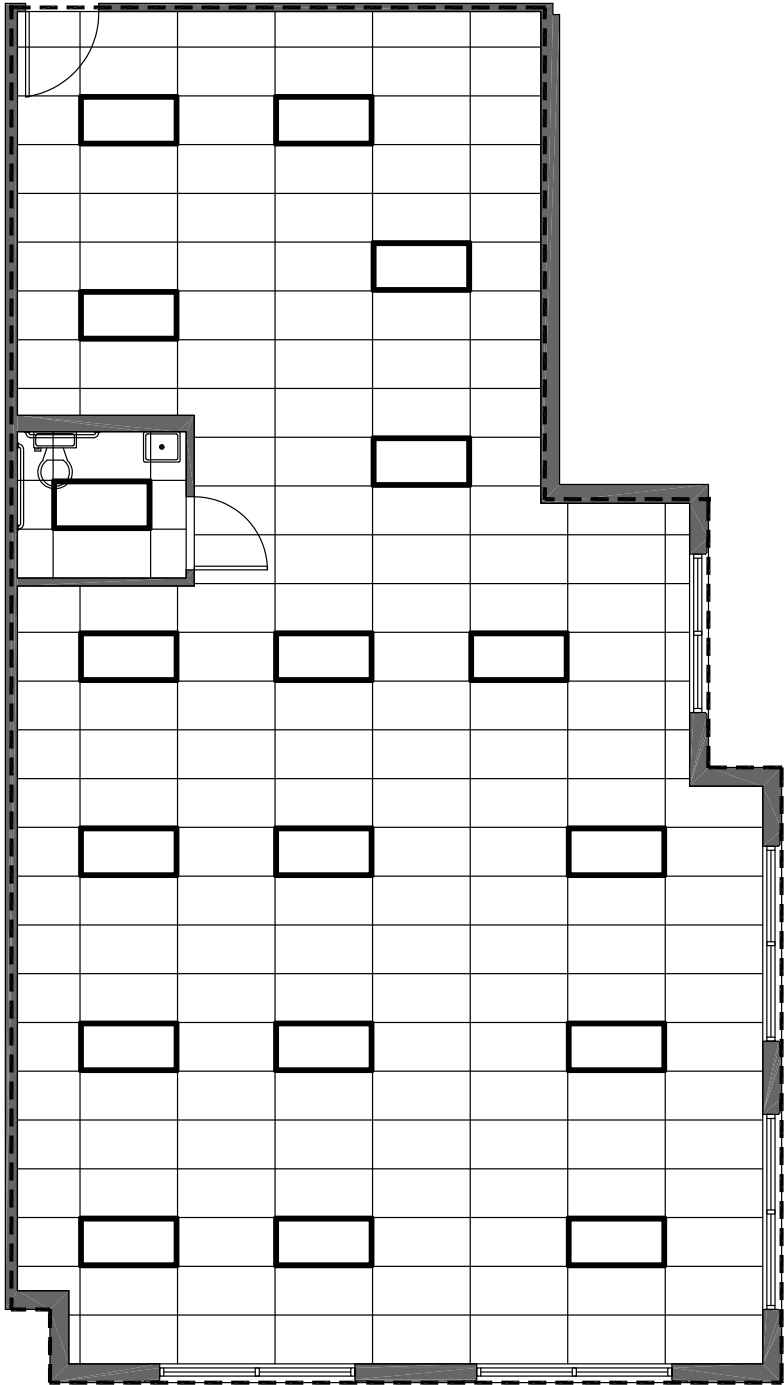
WestPark



PROFESSIONAL
CENTER

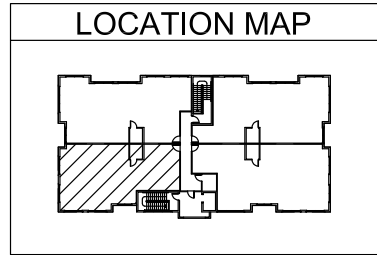
BUILDING 6 UNIT 601

1,785 S.F.

THE ABOVE DRAWING IS CONCEPTUAL ONLY AND IS SUBJECT TO CHANGE WITHOUT NOTICE AT THE DISCRETION OF THE DEVELOPER. THE DEVELOPER RESERVES THE RIGHT TO MAKE ADDITIONS, DELETIONS AND MODIFICATIONS TO THE DRAWINGS AS THE DEVELOPER MAY DEEM APPROPRIATE OR DESIRABLE. DIMENSIONS AND SQUARE FOOTAGE ARE APPROXIMATE AND MAY VARY WITH ACTUAL CONSTRUCTION.
© 2005 KENNETH CARLSON ARCHITECT - P.A.



LEGEND	
	EXHAUST FAN
	2X4 GRID FIXTURE

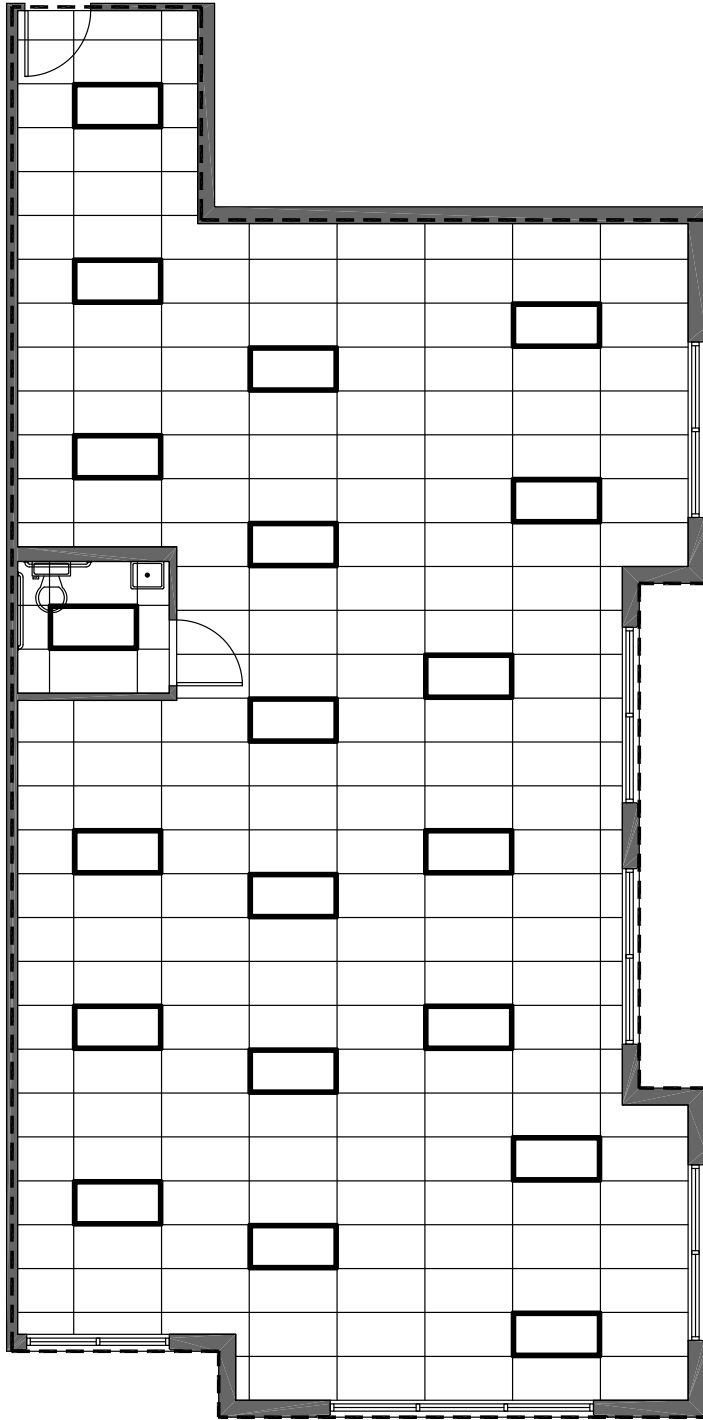




WestPark
 PROFESSIONAL
 CENTER

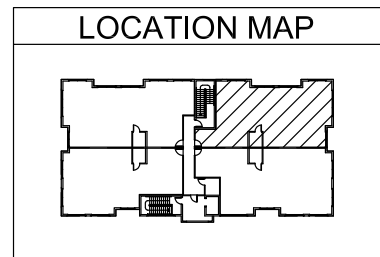
**BUILDING 6
 UNIT 602**

1,547 S.F.

THE ABOVE DRAWING IS CONCEPTUAL ONLY AND IS SUBJECT TO CHANGE WITHOUT NOTICE AT THE DISCRETION OF THE DEVELOPER. THE DEVELOPER RESERVES THE RIGHT TO MAKE ADDITIONS, DELETIONS AND MODIFICATIONS TO THE DRAWINGS AS THE DEVELOPER MAY DEEM APPROPRIATE OR DESIRABLE. DIMENSIONS AND SQUARE FOOTAGE ARE APPROXIMATE AND MAY VARY WITH ACTUAL CONSTRUCTION.
 © 2005 KENNETH CARLSON ARCHITECT - P.A.



LEGEND	
	EXHAUST FAN
	2X4 GRID FIXTURE



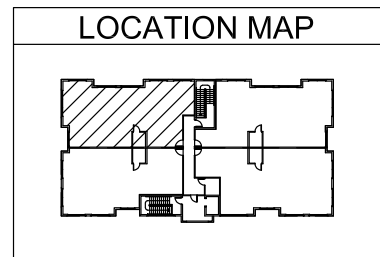
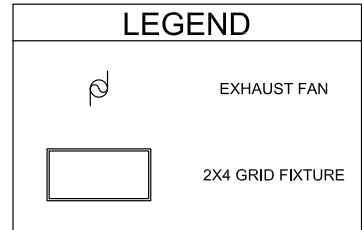
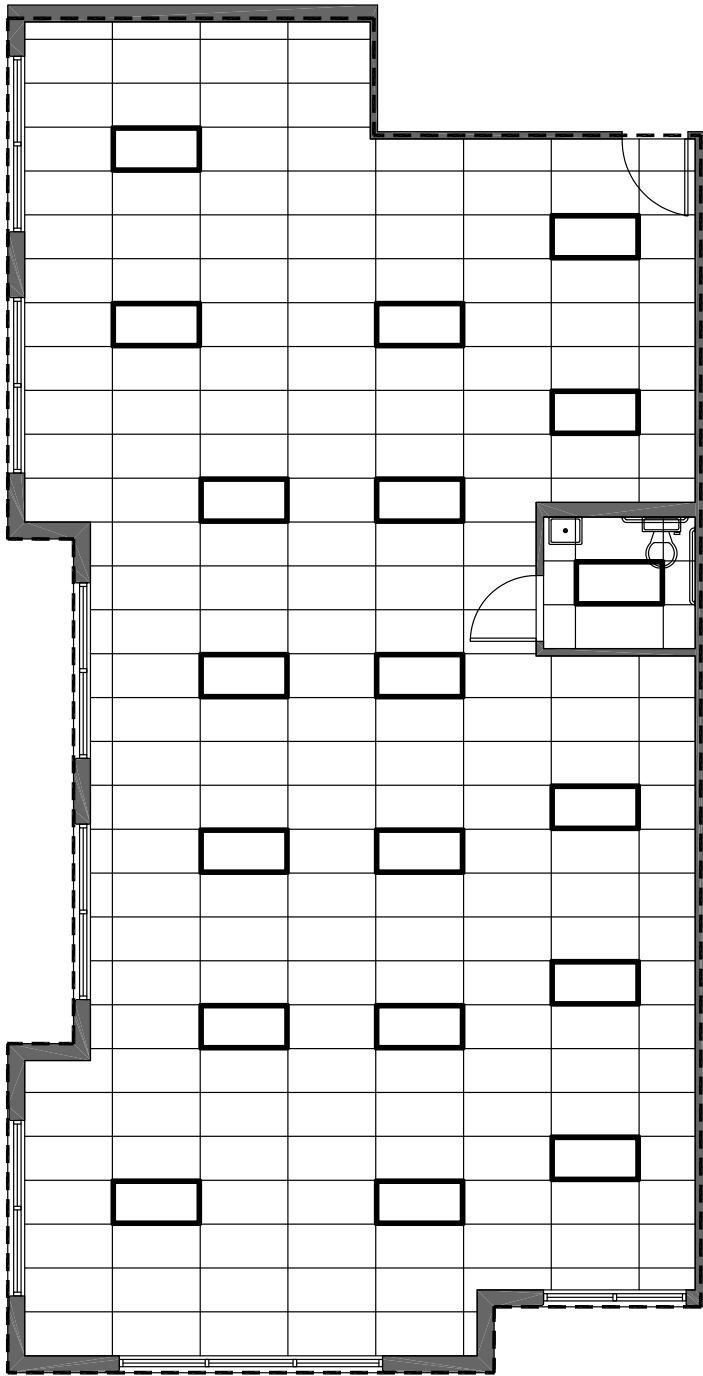
WestPark

PROFESSIONAL
CENTER

BUILDING 6 UNIT 603

1,709 S.F.

THE ABOVE DRAWING IS CONCEPTUAL ONLY AND IS SUBJECT TO CHANGE WITHOUT NOTICE AT THE DISCRETION OF THE DEVELOPER. THE DEVELOPER RESERVES THE RIGHT TO MAKE ADDITIONS, DELETIONS AND MODIFICATIONS TO THE DRAWINGS AS THE DEVELOPER MAY DEEM APPROPRIATE OR DESIRABLE. DIMENSIONS AND SQUARE FOOTAGE ARE APPROXIMATE AND MAY VARY WITH ACTUAL CONSTRUCTION.
© 2005 KENNETH CARLSON ARCHITECT - P.A.



WestPark

PROFESSIONAL
CENTER

BUILDING 6 UNIT 604

1,772 S.F.

THE ABOVE DRAWING IS CONCEPTUAL ONLY AND IS SUBJECT TO CHANGE WITHOUT NOTICE AT THE DISCRETION OF THE DEVELOPER. THE DEVELOPER RESERVES THE RIGHT TO MAKE ADDITIONS, DELETIONS AND MODIFICATIONS TO THE DRAWINGS AS THE DEVELOPER MAY DEEM APPROPRIATE OR DESIRABLE. DIMENSIONS AND SQUARE FOOTAGE ARE APPROXIMATE AND MAY VARY WITH ACTUAL CONSTRUCTION.
© 2005 KENNETH CARLSON ARCHITECT - P.A.